



**Water Monitoring Result at C7 - Windsor House
Mid-Flood Tide**

Date	Time	Weather Condition	Sampling Depth		Water Temperature			pH			Salinity		DO Saturation		DO		Turbidity		Suspended Solids					
					°C		-		ppt		%		mg/L		NTU		mg/L							
			m	Value	Average	Value	Average	Value	Average	Value	Average	Value	Average	Value	Average	Value	Average	Value	Average					
28/9/18	21:15	Cloudy	Middle	1.5	24.80	24.80	24.80	8.04	8.04	8.04	28.43	28.43	28.43	70.9	71.7	72.0	5.01	5.06	5.08	3.23	3.10	3.13	3	3.00
	21:16		Middle	1.5	24.80	24.80		8.04	8.04		28.43	28.43		72.7	72.5		5.13	5.10		3.05	3.14		3	
2/10/18	12:05	Fine	Middle	1.5	28.20	28.20	28.30	7.89	7.89	7.90	31.09	31.09	31.09	73.4	73.9	73.9	4.80	4.84	4.84	2.14	2.13	2.12	3	3.00
	12:07		Middle	1.5	28.40	28.40		7.90	7.90		31.09	31.09		74.2	74.1		4.85	4.85		2.10	2.09		3	
4/10/18	14:20	Fine	Middle	1.5	28.20	28.20	28.30	7.89	7.89	7.89	30.87	30.87	30.88	69.0	70.4	68.4	4.53	4.61	4.48	3.40	3.41	3.40	5	5.00
	14:22		Middle	1.5	28.40	28.40		7.88	7.88		30.88	30.88		66.5	67.8		4.35	4.44		3.40	3.40		5	
6/10/18	16:35	Fine	Middle	1.5	27.90	27.90	28.00	7.89	7.89	7.90	31.64	31.64	31.60	58.1	59.9	59.8	3.81	3.94	3.93	2.98	3.00	3.02	11	11.50
	16:37		Middle	1.5	28.10	28.10		7.91	7.91		31.55	31.55		61.2	60.1		4.02	3.94		3.01	3.09		12	
8/10/18	16:05	Fine	Middle	1.5	28.50	28.50	28.55	7.83	7.83	7.85	31.99	31.99	32.00	75.2	75.1	74.4	4.88	4.88	4.83	4.43	4.36	4.37	7	6.50
	16:07		Middle	1.5	28.60	28.60		7.86	7.86		32.00	32.00		73.6	73.5		4.77	4.77		4.33	4.36		6	
10/10/18	21:45	Cloudy	Middle	1.5	25.40	25.40	25.40	8.21	8.21	8.21	26.30	26.30	26.30	65.1	66.2	65.6	4.61	4.69	4.65	4.99	5.01	4.99	4	3.50
	21:46		Middle	1.5	25.40	25.40		8.21	8.21		26.30	26.30		65.8	65.4		4.66	4.63		5.03	4.92		3	
12/10/18	7:50	Fine	Middle	1.5	25.90	25.90	25.85	7.21	7.21	7.23	31.39	31.39	31.39	70.6	70.5	70.1	4.81	4.81	4.76	7.66	7.67	7.67	7	6.50
	7:52		Middle	1.5	25.80	25.80		7.24	7.24		31.39	31.39		70.2	69.0		4.72	4.71		7.67	7.66		6	
15/10/18	11:00	Cloudy	Middle	1.5	26.60	26.60	26.60	7.85	7.85	7.86	32.25	32.25	32.25	78.7	78.9	78.3	5.27	5.28	5.24	2.97	3.00	3.00	4	3.50
	11:02		Middle	1.5	26.60	26.60		7.86	7.86		32.25	32.25		77.7	77.8		5.20	5.21		3.01	3.02		3	
18/10/18	17:15	Cloudy	Middle	1.5	25.70	25.70	25.50	7.66	7.66	7.70	32.36	32.36	32.37	56.4	55.4	55.0	3.86	3.79	3.79	7.98	7.93	7.90	9	9.50
	17:17		Middle	1.5	25.30	25.30		7.73	7.73		32.38	32.38		53.2	54.8		3.77	3.74		7.85	7.83		10	
20/10/18	14:35	Cloudy	Middle	1.5	25.70	25.70	25.65	7.90	7.90	7.91	32.38	32.38	32.38	78.7	78.6	78.3	5.37	5.35	5.33	3.28	3.28	3.29	8	7.50
	14:37		Middle	1.5	25.60	25.60		7.92	7.92		32.38	32.38		78.0	77.9		5.30	5.30		3.29	3.30		7	
22/10/18	16:10	Cloudy	Middle	1.5	26.20	26.20	26.20	7.82	7.82	7.83	32.11	32.11	32.11	71.6	72.1	72.4	4.83	4.87	4.88	2.40	2.40	2.44	<2	<2
	16:12		Middle	1.5	26.20	26.20		7.83	7.83		32.11	32.11		72.8	72.9		4.91	4.92		2.45	2.49		<2	
24/10/18	18:50	Fine	Middle	1.5	26.20	26.20	26.20	7.90	7.90	7.91	32.44	32.44	32.44	76.6	76.9	76.7	5.16	5.18	5.17	2.31	2.33	2.34	11	11.50
	18:52		Middle	1.5	26.20	26.20		7.91	7.91		32.44	32.44		76.9	76.5		5.17	5.15		2.35	2.37		12	
26/10/18	19:15	Cloudy	Middle	1.5	26.60	26.60	26.60	8.18	8.18	8.18	30.77	30.77	30.77	72.0	72.7	72.3	4.86	4.92	4.89	1.76	1.42	1.59	2	2.00
	19:16		Middle	1.5	26.60	26.60		8.18	8.18		30.77	30.77		72.8	71.5		4.91	4.85		1.72	1.45		<2	

Remarks:
Single underline denotes exceedance over Action Level.
Double underline denotes exceedance over Limit Level.



**Water Monitoring Result at C1 - HKCEC Extension
Mid-Flood Tide**

Date	Time	Weather Condition	Sampling Depth		Water Temperature			pH			Salinity		DO Saturation		DO		Turbidity		Suspended Solids					
					°C			-			ppt		%		mg/L		NTU		mg/L					
			m	Value	Average	Value	Average	Value	Average	Value	Average	Value	Average	Value	Average	Value	Average	Value	Average	Value	Average			
28/9/18	20:36	Cloudy	Middle	3.0	25.30	25.30	25.30	7.93	7.93	7.94	30.26	30.26	30.27	74.8	75.3	74.9	5.19	5.22	5.19	9.58	9.18	9.36	12	11.50
	20:37		Middle	3.0	25.30	25.30		7.95	7.95		30.27	30.27		75.2	74.1		5.21	5.14		9.27	9.39		11	
2/10/18	15:05	Fine	Middle	3.0	27.00	27.00	27.15	8.06	8.06	8.06	31.79	31.79	31.80	82.2	82.7	82.4	5.48	5.51	5.49	6.92	6.96	6.95	10	10.50
	15:07		Middle	3.0	27.30	27.30		8.06	8.06		31.80	31.80		82.3	82.4		5.49	5.49		6.96	6.97		11	
4/10/18	16:30	Fine	Middle	3.0	27.30	27.30	27.30	8.01	8.01	8.02	31.68	31.68	31.68	73.4	73.8	74.0	4.87	4.90	4.94	8.26	8.27	8.24	6	6.00
	16:32		Middle	3.0	27.30	27.30		8.02	8.02		31.68	31.68		74.2	74.4		4.92	5.08		8.23	8.21		6	
6/10/18	15:42	Fine	Middle	2.5	27.10	27.10	27.15	8.02	8.02	8.03	31.46	31.46	31.58	66.6	64.7	63.7	4.43	4.30	4.23	7.54	7.32	7.44	9	9.50
	15:44		Middle	2.5	27.20	27.20		8.03	8.03		31.70	31.70		62.5	60.8		4.16	4.04		7.63	7.25		10	
8/10/18	16:40	Fine	Middle	2.5	27.30	27.30	27.30	7.96	7.96	7.96	31.96	31.96	31.97	73.1	74.3	74.7	4.85	4.93	4.95	5.63	5.60	5.59	8	7.50
	16:42		Middle	2.5	27.30	27.30		7.96	7.96		31.97	31.97		75.4	75.8		5.00	5.03		5.56	5.55		7	
10/10/18	20:40	Cloudy	Middle	3.0	26.00	26.00	26.00	8.15	8.15	8.15	31.46	31.46	31.46	72.3	71.4	72.3	4.92	4.86	4.93	11.88	11.42	<u>11.63</u>	9	8.50
	20:41		Middle	3.0	26.00	26.00		8.15	8.15		31.46	31.46		72.5	72.9		4.96	4.97		11.69	11.55		8	
12/10/18	9:50	Fine	Middle	3.0	26.20	26.20	26.20	7.83	7.83	7.84	32.47	32.47	32.48	78.9	79.1	79.1	5.31	5.32	5.32	7.40	7.35	7.38	12	11.50
	9:52		Middle	3.0	26.20	26.20		7.84	7.84		32.48	32.48		79.0	79.2		5.32	5.33		7.35	7.41		11	
15/10/18	10:35	Cloudy	Middle	3.0	26.20	26.20	26.20	7.85	7.85	7.86	32.40	32.40	32.40	80.2	80.5	80.2	5.40	5.46	5.41	6.88	6.70	6.83	7	7.50
	10:37		Middle	3.0	26.20	26.20		7.86	7.86		32.40	32.40		79.7	80.2		5.36	5.40		6.88	6.87		8	
18/10/18	16:07	Cloudy	Middle	2.5	25.50	25.50	25.50	7.94	7.94	7.94	32.74	32.74	32.75	65.1	64.5	64.1	4.42	4.39	4.36	7.85	7.66	7.70	9	10.00
	16:09		Middle	2.5	25.50	25.50		7.94	7.94		32.75	32.75		63.4	63.2		4.32	4.30		7.65	7.65		11	
20/10/18	14:05	Cloudy	Middle	3.0	25.40	25.40	25.40	7.96	7.96	7.96	32.96	32.96	32.97	78.6	79.5	78.7	5.35	5.41	5.36	5.23	5.14	5.18	5	4.50
	14:07		Middle	3.0	25.40	25.40		7.96	7.96		32.97	32.97		78.4	78.4		5.34	5.34		5.19	5.16		4	
22/10/18	15:20	Cloudy	Middle	2.5	26.10	26.10	26.10	7.86	7.86	7.86	32.78	32.78	32.78	76.8	77.1	77.1	5.17	5.19	5.19	4.66	4.63	4.69	4	3.50
	15:22		Middle	2.5	26.10	26.10		7.86	7.86		32.78	32.78		77.1	77.4		5.19	5.21		4.71	4.74		3	
24/10/18	17:05	Fine	Middle	3.0	25.80	25.80	25.75	7.93	7.93	7.94	32.73	32.73	32.73	74.9	74.6	75.3	5.02	5.06	5.09	3.90	3.90	3.91	5	5.00
	17:07		Middle	3.0	25.70	25.70		7.94	7.94		32.73	32.73		75.7	76.0		5.13	5.15		3.91	3.94		5	
26/10/18	21:54	Cloudy	Middle	3.0	26.00	26.00	26.00	8.22	8.22	8.22	32.28	32.28	32.28	73.4	74.4	73.8	4.97	5.03	4.97	7.67	7.51	7.53	7	7.00
	21:55		Middle	3.0	26.00	26.00		8.22	8.22		32.28	32.28		73.3	74.2		4.86	5.02		7.10	7.83		7	

Remarks:
Single underline denotes exceedance over Action Level.
Double underline denotes exceedance over Limit Level.



**Water Monitoring Result at P1 - HKCEC Phase I
Mid-Flood Tide**

Date	Time	Weather Condition	Sampling Depth		Water Temperature			pH			Salinity		DO Saturation		DO		Turbidity		Suspended Solids					
					°C		-		ppt		%		mg/L		NTU		mg/L							
			m	Value	Average	Value	Average	Value	Average	Value	Average	Value	Average	Value	Average	Value	Average	Value	Average					
28/9/18	20:08	Cloudy	Middle	3.0	25.30	25.30	25.30	8.10	8.10	8.10	30.39	30.39	30.39	76.3	78.0	77.1	5.29	5.40	5.34	9.06	8.71	8.98	8	8.50
	20:09		Middle	3.0	25.30	25.30		8.10	8.10		30.39	30.39		77.4	76.6		5.36	5.31		9.12	9.02		9	
2/10/18	14:45	Fine	Middle	3.0	26.10	26.10	26.20	7.95	7.95	7.97	31.65	31.65	31.65	81.5	81.5	81.5	5.32	5.33	5.33	7.13	7.12	7.12	15	15.50
	14:47		Middle	3.0	26.30	26.30		7.99	7.99		31.65	31.65		81.6	81.4		5.33	5.32		7.12	7.12		16	
4/10/18	16:10	Fine	Middle	3.0	27.60	27.60	27.65	7.97	7.97	7.97	31.59	31.59	31.59	77.7	77.5	76.9	5.13	5.12	5.08	6.31	6.30	6.29	7	7.00
	16:12		Middle	3.0	27.70	27.70		7.97	7.97		31.59	31.59		74.4	77.8		4.92	5.14		6.26	6.27		7	
6/10/18	15:26	Fine	Middle	2.5	28.30	28.30	28.35	7.94	7.94	7.96	31.89	31.89	31.88	62.0	61.1	61.2	4.03	3.98	3.98	4.32	4.30	4.29	12	12.00
	15:28		Middle	2.5	28.40	28.40		7.97	7.97		31.87	31.87		61.0	60.6		3.98	3.94		4.29	4.23		12	
8/10/18	16:20	Fine	Middle	2.5	27.90	27.90	27.95	7.89	7.89	7.90	32.08	32.08	32.09	81.0	82.0	82.0	5.31	5.37	5.37	6.65	6.66	6.66	10	10.50
	16:22		Middle	2.5	28.00	28.00		7.91	7.91		32.09	32.09		82.5	82.5		5.40	5.40		6.65	6.67		11	
10/10/18	20:15	Cloudy	Middle	3.0	25.70	25.70	25.70	8.18	8.18	8.18	31.66	31.66	31.66	72.0	73.1	74.0	4.91	4.99	5.05	18.76	18.19	18.35	10	9.50
	20:16		Middle	3.0	25.70	25.70		8.18	8.18		31.66	31.66		75.8	75.0		5.18	5.11		18.29	18.16		9	
12/10/18	9:30	Fine	Middle	3.0	26.50	26.50	26.55	7.65	7.65	7.63	32.16	32.16	32.16	78.5	77.9	77.9	5.16	5.21	5.19	8.02	8.01	8.00	13	13.50
	9:32		Middle	3.0	26.60	26.60		7.61	7.61		32.16	32.16		78.0	77.0		5.22	5.15		8.00	7.98		14	
15/10/18	10:15	Cloudy	Middle	3.0	26.60	26.60	26.70	7.65	7.65	7.65	32.51	32.51	32.51	73.9	75.1	74.6	4.93	5.01	4.97	5.68	5.75	5.75	7	7.50
	10:17		Middle	3.0	26.80	26.80		7.65	7.65		32.51	32.51		74.3	74.9		4.95	4.99		5.78	5.79		8	
18/10/18	15:51	Cloudy	Middle	2.5	25.00	25.00	25.00	7.87	7.87	7.88	32.71	32.71	32.71	57.0	56.4	56.4	3.91	3.87	3.86	6.42	6.42	6.43	7	8.00
	15:53		Middle	2.5	25.00	25.00		7.88	7.88		32.71	32.71		56.2	55.8		3.81	3.83		6.44	6.44		9	
20/10/18	13:45	Cloudy	Middle	3.0	25.30	25.30	25.35	7.91	7.91	7.92	33.04	33.04	33.04	76.1	75.3	75.5	5.18	5.11	5.14	4.24	4.27	4.27	5	5.00
	13:47		Middle	3.0	25.40	25.40		7.92	7.92		33.04	33.04		75.5	75.1		5.14	5.11		4.27	4.28		5	
22/10/18	15:00	Cloudy	Middle	2.5	26.40	26.40	26.45	7.80	7.80	7.82	32.88	32.88	32.89	78.8	78.6	78.2	5.27	5.24	5.22	3.99	3.94	3.94	2	2.00
	15:02		Middle	2.5	26.50	26.50		7.84	7.84		32.89	32.89		77.6	77.8		5.18	5.19		3.92	3.92		2	
24/10/18	16:45	Fine	Middle	3.0	26.10	26.10	26.10	7.86	7.86	7.87	32.84	32.84	32.85	76.6	76.4	76.5	5.15	5.14	5.15	5.00	5.00	4.99	7	7.50
	16:47		Middle	3.0	26.10	26.10		7.87	7.87		32.86	32.86		76.4	76.7		5.14	5.16		4.98	4.97		8	
26/10/18	21:25	Cloudy	Middle	3.0	26.00	26.00	26.00	8.24	8.24	8.24	32.34	32.34	32.34	74.8	75.7	75.2	5.06	5.12	5.09	7.81	7.28	7.65	6	6.50
	21:26		Middle	3.0	26.00	26.00		8.24	8.24		32.34	32.34		75.3	75.1		5.09	5.08		7.66	7.84		7	

Remarks:
Single underline denotes exceedance over Action Level.
Double underline denotes exceedance over Limit Level.



**Water Monitoring Result at P3 - APA
Mid-Flood Tide**

Date	Time	Weather Condition	Sampling Depth		Water Temperature			pH			Salinity			DO Saturation			DO			Turbidity			Suspended Solids	
					°C		-		ppt		%		mg/L		NTU		mg/L							
			m	Value	Average	Value	Average	Value	Average	Value	Average	Value	Average	Value	Average	Value	Average	Value	Average	Value	Average	Value	Average	
28/9/18	20:13	Cloudy	Middle	3.0	25.10	25.10	25.10	8.14	8.14	8.14	30.38	30.38	30.38	79.1	78.8	78.0	5.50	5.47	5.42	9.22	9.72	9.46	9	8.50
	20:14		Middle	3.0	25.10	25.10		8.14	8.14		30.38	30.38		77.7	76.3		5.38	5.32		9.48	9.42		8	
2/10/18	14:50	Fine	Middle	3.0	27.40	27.40	27.45	8.05	8.05	8.06	31.65	31.65	31.65	78.6	78.7	78.5	5.20	5.22	5.20	5.95	5.95	5.95	9	9.50
	14:52		Middle	3.0	27.50	27.50		8.06	8.06		31.65	31.65		78.5	78.2		5.19	5.17		5.94	5.94		10	
4/10/18	16:15	Fine	Middle	3.0	27.30	27.30	27.30	7.98	7.98	7.98	31.56	31.56	31.56	76.0	76.0	76.1	5.05	5.05	5.06	5.59	5.63	5.61	6	6.50
	16:17		Middle	3.0	27.30	27.30		7.98	7.98		31.56	31.56		76.2	76.2		5.06	5.06		5.61	5.60		7	
6/10/18	15:30	Fine	Middle	2.5	27.20	27.20	27.15	7.97	7.97	7.98	31.93	31.93	31.92	64.1	63.4	64.4	4.26	4.22	4.28	5.14	5.04	4.94	9	9.00
	15:32		Middle	2.5	27.10	27.10		7.99	7.99		31.91	31.91		64.5	65.4		4.29	4.35		4.86	4.71		9	
8/10/18	16:25	Fine	Middle	2.5	27.40	27.40	27.35	7.94	7.94	7.94	32.07	32.07	32.07	78.7	79.2	79.1	5.19	5.23	5.22	6.04	6.04	6.04	11	10.50
	16:27		Middle	2.5	27.30	27.30		7.94	7.94		32.07	32.07		79.7	78.8		5.26	5.20		6.04	6.04		10	
10/10/18	20:23	Cloudy	Middle	3.0	25.70	25.70	25.70	8.19	8.19	8.19	31.70	31.70	31.70	74.8	75.3	74.4	5.11	5.15	5.08	16.20	16.30	<u>16.08</u>	10	9.50
	20:24		Middle	3.0	25.70	25.70		8.19	8.19		31.70	31.70		73.9	73.6		5.02	5.03		15.88	15.92		9	
12/10/18	9:35	Fine	Middle	3.0	26.20	26.20	26.20	7.69	7.69	7.70	32.16	32.16	32.16	73.1	75.4	75.3	5.07	5.09	5.12	8.66	8.63	8.64	12	12.50
	9:37		Middle	3.0	26.20	26.20		7.71	7.71		32.16	32.16		76.2	76.5		5.14	5.16		8.63	8.62		13	
15/10/18	10:20	Cloudy	Middle	3.0	26.40	26.40	26.35	7.75	7.75	7.75	31.88	31.88	31.88	75.3	75.4	74.5	5.07	5.07	5.01	6.92	6.95	6.95	10	10.50
	10:22		Middle	3.0	26.30	26.30		7.75	7.75		31.88	31.88		74.2	73.2		4.99	4.92		6.97	6.96		11	
18/10/18	15:55	Cloudy	Middle	2.5	25.20	25.20	25.25	7.89	7.89	7.90	32.66	32.66	32.69	66.0	63.0	62.2	4.51	4.30	4.25	7.85	7.92	7.78	12	12.00
	15:57		Middle	2.5	25.30	25.30		7.91	7.91		32.72	32.72		60.9	59.0		4.16	4.03		7.67	7.66		12	
20/10/18	13:50	Cloudy	Middle	3.0	24.90	24.90	24.90	7.93	7.93	7.94	32.99	32.99	32.99	78.7	77.2	78.8	5.40	5.44	5.44	4.35	4.35	4.35	5	5.50
	13:52		Middle	3.0	24.90	24.90		7.94	7.94		32.99	32.99		79.8	79.6		5.47	5.46		4.34	4.35		6	
22/10/18	15:05	Cloudy	Middle	2.5	25.80	25.80	25.85	7.88	7.88	7.88	32.82	32.82	32.82	74.6	73.9	74.4	5.05	5.00	5.03	4.03	4.02	4.05	2	2.00
	15:07		Middle	2.5	25.90	25.90		7.88	7.88		32.82	32.82		74.3	74.8		5.02	5.05		4.06	4.07		2	
24/10/18	16:50	Fine	Middle	3.0	25.70	25.70	25.70	7.90	7.90	7.90	32.81	32.81	32.81	76.7	77.1	76.1	5.19	5.22	5.14	4.71	4.68	4.68	5	5.00
	16:52		Middle	3.0	25.70	25.70		7.90	7.90		32.81	32.81		74.9	75.5		5.05	5.10		4.67	4.64		5	
26/10/18	21:29	Cloudy	Middle	3.0	25.90	25.90	25.90	8.25	8.25	8.25	32.43	32.34	32.38	76.1	77.4	77.1	5.16	5.24	5.22	7.82	7.55	7.67	8	7.00
	21:30		Middle	3.0	25.90	25.90		8.25	8.25		32.40	32.34		77.7	77.0		5.26	5.22		7.65	7.64		6	

Remarks:
Single underline denotes exceedance over Action Level.
Double underline denotes exceedance over Limit Level.



**Water Monitoring Result at P4 - SOC
Mid-Flood Tide**

Date	Time	Weather Condition	Sampling Depth		Water Temperature			pH			Salinity			DO Saturation		DO		Turbidity		Suspended Solids				
					°C		-		ppt		%		mg/L		NTU		mg/L							
					Value	Average	Value	Average	Value	Average	Value	Average	Value	Average	Value	Average	Value	Average	Value	Average				
28/9/18	20:20	Cloudy	Middle	3.0	25.10	25.10	25.10	8.16	8.16	8.16	30.46	30.46	30.46	78.9	79.0	78.0	5.43	5.48	5.40	10.46	10.92	10.57	12	12.00
	20:21		Middle	3.0	25.10	25.10		8.16	8.16		30.46	30.46		77.7	76.2		5.39	5.29		10.62	10.28		12	
2/10/18	14:55	Fine	Middle	3.0	27.20	27.20	27.20	8.02	8.02	8.02	31.81	31.81	31.84	78.3	79.1	78.6	5.20	5.25	5.22	7.13	7.06	7.11	10	10.00
	14:57		Middle	3.0	27.20	27.20		8.02	8.02		31.87	31.87		78.4	78.5		5.20	5.22		7.09	7.17		10	
4/10/18	16:20	Fine	Middle	3.0	27.10	27.10	27.10	7.99	7.99	8.00	31.65	31.65	31.65	76.9	76.9	77.1	5.13	5.16	5.12	6.52	6.53	6.49	6	6.50
	16:22		Middle	3.0	27.10	27.10		8.00	8.00		31.65	31.65		77.3	77.3		5.15	5.02		6.45	6.45		7	
6/10/18	15:34	Fine	Middle	2.5	27.10	27.10	27.15	8.00	8.00	8.01	31.77	31.77	31.78	69.4	66.5	66.7	4.62	4.41	4.43	6.55	6.42	6.34	9	9.50
	15:36		Middle	2.5	27.20	27.20		8.01	8.01		31.78	31.78		65.7	65.0		4.37	4.32		6.19	6.20		10	
8/10/18	16:30	Fine	Middle	2.5	27.40	27.40	27.40	7.96	7.96	7.96	32.03	32.03	32.02	78.5	78.8	78.9	5.19	5.21	5.22	4.96	4.96	4.96	10	9.00
	16:32		Middle	2.5	27.40	27.40		7.96	7.96		32.00	32.00		79.1	79.0		5.23	5.25		4.95	4.95		8	
10/10/18	20:29	Cloudy	Middle	3.0	25.70	25.70	25.65	8.20	8.20	8.20	31.65	31.65	31.65	71.4	70.9	70.9	4.89	4.85	4.85	8.32	8.98	8.58	9	9.00
	20:30		Middle	3.0	25.60	25.60		8.20	8.20		31.65	31.65		70.2	71.0		4.81	4.86		8.77	8.26		9	
12/10/18	9:40	Fine	Middle	3.0	26.30	26.30	26.25	7.75	7.75	7.77	32.38	32.38	32.38	74.7	75.7	76.3	5.02	5.10	5.13	7.29	7.33	7.34	10	10.50
	9:42		Middle	3.0	26.20	26.20		7.78	7.78		32.39	32.38		77.3	77.4		5.20	5.21		7.38	7.34		11	
15/10/18	10:25	Cloudy	Middle	6.0	26.20	26.20	26.20	7.78	7.78	7.79	32.31	32.31	32.34	76.1	76.6	76.3	5.11	5.16	5.14	6.47	6.37	6.43	10	10.00
	10:27		Middle	3.0	26.20	26.20		7.80	7.80		32.37	32.37		76.0	76.6		5.11	5.16		6.42	6.44		10	
18/10/18	15:59	Cloudy	Middle	2.5	25.30	25.30	25.30	7.92	7.92	7.93	32.79	32.79	32.80	64.9	62.0	61.6	4.43	4.23	4.21	7.21	7.21	7.21	9	9.50
	16:01		Middle	2.5	25.30	25.30		7.93	7.93		32.80	32.80		60.2	59.4		4.11	4.05		7.29	7.11		10	
20/10/18	13:55	Cloudy	Middle	3.0	25.10	25.10	25.10	7.95	7.95	7.95	32.97	32.97	32.97	78.4	78.7	78.7	5.36	5.38	5.38	4.55	4.65	4.61	4	4.00
	13:57		Middle	3.0	25.10	25.10		7.95	7.95		32.97	32.97		78.7	79.0		5.38	5.40		4.63	4.59		4	
22/10/18	15:10	Cloudy	Middle	2.5	26.00	26.00	26.00	7.84	7.84	7.85	32.79	32.79	32.79	74.3	74.8	74.9	5.01	5.04	5.04	4.44	4.43	4.46	2	2.50
	15:12		Middle	2.5	26.00	26.00		7.85	7.85		32.79	32.79		75.3	75.0		5.07	5.05		4.47	4.48		3	
24/10/18	16:55	Fine	Middle	3.0	25.60	25.60	25.60	7.91	7.91	7.92	32.81	32.81	32.81	79.9	80.2	80.0	5.43	5.44	5.43	4.55	4.55	4.60	8	7.00
	16:57		Middle	3.0	25.60	25.60		7.92	7.92		32.81	32.81		79.2	80.5		5.39	5.46		4.64	4.65		6	
26/10/18	21:37	Cloudy	Middle	3.0	25.90	25.90	25.90	8.26	8.26	8.26	32.31	32.31	32.31	77.3	78.1	77.4	5.24	5.29	5.24	6.46	6.38	6.33	8	8.00
	21:38		Middle	3.0	25.90	25.90		8.26	8.26		32.31	32.31		77.5	76.5		5.25	5.18		6.34	6.15		8	

Remarks:
Single underline denotes exceedance over Action Level.
Double underline denotes exceedance over Limit Level.



**Water Monitoring Result at P5 - WCT / RT / IT
Mid-Flood Tide**

Date	Time	Weather Condition	Sampling Depth		Water Temperature			pH			Salinity		DO Saturation		DO		Turbidity		Suspended Solids					
					°C			-			ppt		%		mg/L		NTU		mg/L					
					Value	Average		Value	Average		Value	Average	Value	Average	Value	Average	Value	Average	Value	Average				
28/9/18	20:28	Cloudy	Middle	3.0	25.30	25.30	25.30	8.16	8.16	8.16	30.47	30.47	30.47	76.7	77.3	77.3	5.31	5.39	5.36	10.50	10.44	10.20	12	12.50
	20:29		Middle	3.0	25.30	25.30		8.16	8.16		30.47	30.47		77.5	77.7		5.36	5.39		9.79	10.06		13	
2/10/18	15:00	Fine	Middle	3.0	27.20	27.20	27.20	8.04	8.04	8.05	31.86	31.86	31.86	77.9	78.4	78.3	5.19	5.21	5.21	6.87	6.88	6.89	11	11.00
	15:02		Middle	3.0	27.20	27.20		8.05	8.05		31.86	31.86		78.3	78.6		5.20	5.22		6.89	6.90		11	
4/10/18	16:25	Fine	Middle	3.0	27.30	27.30	27.30	7.98	7.98	7.50	31.71	31.71	31.71	82.5	78.8	79.7	5.48	5.23	5.28	6.44	6.43	6.43	9	9.00
	16:27		Middle	3.0	27.30	27.30		7.01	7.01		31.71	31.71		79.3	78.1		5.24	5.18		6.43	6.42		9	
6/10/18	15:38	Fine	Middle	2.5	27.10	27.10	27.05	8.01	8.01	8.02	31.81	31.81	31.83	68.1	66.7	67.2	4.54	4.44	4.48	6.55	6.42	6.65	11	11.50
	15:40		Middle	2.5	27.00	27.00		8.02	8.02		31.84	31.84		67.2	66.6		4.48	4.44		6.90	6.73		12	
8/10/18	16:35	Fine	Middle	2.5	27.70	27.70	27.70	7.97	7.97	7.97	31.99	31.99	32.00	75.7	77.2	77.0	4.99	5.08	5.07	6.58	6.58	6.60	8	8.50
	16:37		Middle	2.5	27.70	27.70		7.96	7.96		32.00	32.00		77.6	77.4		5.11	5.10		6.62	6.63		9	
10/10/18	20:35	Cloudy	Middle	3.0	25.60	25.60	25.60	8.20	8.20	8.20	31.62	31.62	31.62	66.4	68.3	67.8	4.54	4.67	4.64	8.54	8.97	8.74	9	9.00
	20:36		Middle	3.0	25.60	25.60		8.20	8.20		31.62	31.62		68.2	68.4		4.67	4.68		8.68	8.78		9	
12/10/18	9:45	Fine	Middle	3.0	26.30	26.30	26.30	7.81	7.81	7.82	32.50	32.50	32.51	74.6	75.9	76.0	5.02	5.10	5.11	7.89	7.88	7.92	12	11.50
	9:47		Middle	3.0	26.30	26.30		7.82	7.82		32.51	32.51		76.7	76.7		5.16	5.16		7.94	7.95		11	
15/10/18	10:30	Cloudy	Middle	3.0	26.30	26.30	26.30	7.82	7.82	7.83	32.36	32.36	32.36	75.0	75.4	75.4	5.05	5.07	5.07	7.12	7.11	7.10	10	10.00
	10:32		Middle	3.0	26.30	26.30		7.84	7.84		32.36	32.36		75.0	76.1		5.04	5.11		7.08	7.08		10	
18/10/18	16:03	Cloudy	Middle	2.5	25.30	25.30	25.35	7.98	7.98	7.96	32.67	32.67	32.71	66.0	63.5	63.6	4.50	4.33	4.34	6.64	6.65	6.67	11	10.50
	16:05		Middle	2.5	25.40	25.40		7.94	7.94		32.75	32.75		62.7	62.2		4.28	4.24		6.69	6.68		10	
20/10/18	14:00	Cloudy	Middle	3.0	25.60	25.60	25.55	7.96	7.96	7.96	32.84	32.84	32.84	81.3	80.3	80.8	5.52	5.46	5.49	4.85	4.91	4.90	5	5.50
	14:02		Middle	3.0	25.50	25.50		7.96	7.96		32.84	32.84		80.9	80.8		5.50	5.49		4.92	4.93		6	
22/10/18	15:15	Cloudy	Middle	2.5	26.00	26.00	26.05	7.86	7.86	7.86	32.81	32.81	32.81	74.4	75.0	75.0	5.01	5.05	5.05	3.75	3.88	3.85	<2	<2
	15:17		Middle	2.5	26.10	26.10		7.86	7.86		32.81	32.81		75.2	75.2		5.06	5.06		3.89	3.89		<2	
24/10/18	17:00	Fine	Middle	3.0	25.60	25.60	25.60	7.92	7.92	7.93	32.82	32.82	32.82	77.0	78.1	78.1	5.22	5.31	5.31	4.01	4.00	3.99	8	8.50
	17:02		Middle	3.0	25.60	25.60		7.93	7.93		32.82	32.82		78.8	78.5		5.35	5.34		3.96	3.98		9	
26/10/18	21:45	Cloudy	Middle	3.0	26.00	26.00	26.00	8.26	8.26	8.26	32.31	32.31	32.31	79.3	78.3	78.6	5.36	5.30	5.32	7.28	7.60	7.30	5	6.00
	21:46		Middle	3.0	26.00	26.00		8.26	8.26		32.31	32.31		78.6	78.0		5.32	5.28		7.20	7.11		7	

Remarks:
Single underline denotes exceedance over Action Level.
Double underline denotes exceedance over Limit Level.



**Water Monitoring Result at RW21-P789 - GEC / CRB / SHK
Mid-Flood Tide**

Date	Time	Weather Condition	Sampling Depth m	Water Temperature °C			pH			Salinity ppt			DO Saturation %		DO mg/L		Turbidity NTU		Suspended Solids mg/L					
				Value	Average		Value	Average		Value	Average		Value	Average		Value	Average	Value	Average	Value	Average			
28/9/18	20:53	Cloudy	Middle	4.0	25.20	25.20	25.20	8.05	8.05	8.05	30.27	30.27	30.27	77.2	77.8	77.1	5.36	5.40	5.36	9.79	9.76	9.73	7	6.50
	20:54		Middle	4.0	25.20	25.20		8.05	8.05		30.27	30.27		77.0	76.5		5.34	5.32		9.70	9.66		6	
2/10/18	11:25	Fine	Middle	4.0	28.30	28.30	28.35	7.87	7.87	7.89	31.54	31.54	31.56	79.0	78.7	78.5	5.19	5.13	5.13	7.32	7.41	7.33	8	8.50
	11:27		Middle	4.0	28.40	28.40		7.90	7.90		31.57	31.57		78.1	78.2		5.09	5.09		7.29	7.30		9	
4/10/18	13:45	Fine	Middle	4.0	28.30	28.30	28.30	7.94	7.94	7.94	31.48	31.48	31.49	75.9	77.1	76.6	4.96	5.04	5.01	6.65	6.59	6.58	5	5.50
	13:47		Middle	4.0	28.30	28.30		7.94	7.94		31.49	31.49		77.1	76.3		5.04	4.99		6.51	6.56		6	
6/10/18	16:08	Fine	Middle	3.5	27.90	27.90	28.00	7.96	7.96	7.94	31.96	31.96	31.76	66.8	64.8	63.2	4.38	4.29	4.16	6.92	6.91	6.98	11	11.50
	16:10		Middle	3.5	28.10	28.10		7.91	7.91		31.55	31.55		61.2	60.1		4.02	3.94		7.01	7.09		12	
8/10/18	19:00	Fine	Middle	4.0	27.10	27.10	27.05	7.94	7.94	7.95	32.24	32.24	32.25	79.7	80.3	80.1	5.30	5.34	5.32	8.69	8.61	8.62	16	16.00
	19:02		Middle	4.0	27.00	27.00		7.95	7.95		32.25	32.25		80.1	80.2		5.32	5.33		8.58	8.59		16	
10/10/18	21:10	Cloudy	Middle	4.0	26.00	26.00	26.00	8.12	8.12	8.12	31.63	31.63	31.63	73.6	74.9	74.6	5.00	5.09	5.07	12.63	12.43	12.46	7	7.50
	21:11		Middle	4.0	26.00	26.00		8.12	8.12		31.63	31.63		74.8	75.0		5.08	5.10		12.49	12.29		8	
12/10/18	10:55	Fine	Middle	4.0	26.70	26.70	26.70	7.85	7.85	7.86	32.36	32.36	32.36	87.2	87.4	87.3	5.49	5.51	5.50	6.97	6.96	6.96	11	10.50
	10:57		Middle	4.0	26.70	26.70		7.86	7.86		32.36	32.36		87.1	87.4		5.48	5.50		6.95	6.96		10	
15/10/18	10:45	Cloudy	Middle	4.0	26.50	26.50	26.50	7.86	7.86	7.87	32.35	32.35	32.35	81.3	81.5	81.3	5.45	5.47	5.45	6.71	6.68	6.69	10	10.00
	10:47		Middle	4.0	26.50	26.50		7.88	7.88		32.35	32.35		81.2	81.3		5.44	5.45		6.68	6.69		10	
18/10/18	17:01	Cloudy	Middle	3.5	25.80	25.80	25.80	7.85	7.85	7.87	32.86	32.86	32.86	58.2	56.8	56.6	3.94	3.84	3.83	6.38	6.38	6.36	9	9.50
	17:03		Middle	3.5	25.80	25.80		7.89	7.89		32.86	32.86		56.0	55.4		3.79	3.75		6.36	6.32		10	
20/10/18	14:20	Cloudy	Middle	4.0	25.80	25.80	25.65	7.94	0.94	6.21	32.64	32.64	32.65	82.4	82.6	82.0	5.61	5.62	5.58	4.76	4.76	4.77	5	5.50
	14:22		Middle	4.0	25.50	25.50		7.97	7.97		32.65	32.65		81.8	81.3		5.57	5.51		4.77	4.79		6	
22/10/18	15:30	Cloudy	Middle	3.5	26.10	26.10	26.10	7.83	7.83	7.85	32.69	32.69	32.69	78.6	77.0	77.9	5.30	5.19	5.25	3.96	4.09	4.06	6	6.00
	15:32		Middle	3.5	26.10	26.10		7.86	7.86		32.69	32.69		78.1	77.8		5.26	5.25		4.10	4.10		6	
24/10/18	17:55	Fine	Middle	4.0	26.00	26.00	26.00	7.93	7.93	7.94	32.81	32.81	32.81	79.8	79.8	79.9	5.38	5.38	5.39	3.66	3.70	3.69	21	20.50
	17:57		Middle	4.0	26.00	26.00		7.94	7.94		32.81	32.81		79.9	80.1		5.39	5.40		3.70	3.69		20	
26/10/18	18:30	Cloudy	Middle	3.5	26.70	26.70	26.70	8.17	8.17	6.17	31.80	31.80	31.80	75.4	77.4	76.9	5.05	5.19	5.17	1.26	1.22	1.22	4	4.00
	18:31		Middle	3.5	26.70	26.70		8.18	0.17		31.80	31.80		78.3	76.5		5.27	5.15		1.20	1.18		4	

Remarks:
Single underline denotes exceedance over Action Level.
Double underline denotes exceedance over Limit Level.



**Water Monitoring Result at WSD19 - Sheung Wan
Mid-Flood Tide**

Date	Time	Weather Condition	Sampling Depth		Water Temperature			pH			Salinity			DO Saturation		DO		Turbidity		Suspended Solids				
					°C		-		ppt		%		mg/L		NTU		mg/L							
			m	Value	Average	Value	Average	Value	Average	Value	Average	Value	Average	Value	Average	Value	Average	Value	Average	Value	Average			
28/9/18	19:30	Cloudy	Middle	3.5	24.80	24.80	24.80	7.99	7.99	7.99	29.46	29.46	29.46	74.0	76.1	75.6	5.20	5.34	5.31	9.36	9.25	9.27	10	9.00
	19:31		Middle	3.5	24.80	24.80		7.99	7.99		29.46	29.46		76.0	76.2		5.34	5.35		9.17	9.30		8	
2/10/18	14:00	Fine	Middle	4.0	28.60	28.60	28.65	7.86	7.86	7.87	31.66	31.66	31.66	80.5	80.6	80.5	5.22	5.22	5.22	7.87	7.82	7.79	11	11.00
	14:02		Middle	4.0	28.70	28.70		7.88	7.88		31.66	31.66		80.6	80.4		5.22	5.21		7.74	7.74		11	
4/10/18	15:25	Fine	Middle	4.0	27.90	27.90	27.95	7.84	7.84	7.86	31.65	31.65	31.66	74.7	75.0	75.0	4.90	4.92	4.92	7.73	7.72	7.73	12	11.50
	15:27		Middle	4.0	28.00	28.00		7.87	7.87		31.66	31.66		75.2	75.0		4.93	4.92		7.71	7.76		11	
6/10/18	17:58	Fine	Middle	3.5	27.30	27.30	27.35	7.92	7.92	7.93	32.11	32.11	32.11	56.3	56.5	55.7	3.72	3.73	3.68	7.73	7.74	7.73	10	10.00
	18:00		Middle	3.5	27.40	27.40		7.94	7.94		32.11	32.11		55.4	54.5		3.67	3.60		7.77	7.67		10	
8/10/18	15:00	Fine	Middle	3.5	28.70	28.70	28.80	7.82	7.82	7.82	32.03	32.03	32.03	86.2	86.2	85.5	5.57	5.57	5.52	7.42	7.32	7.37	11	11.50
	15:02		Middle	3.5	28.90	28.90		7.82	7.82		32.02	32.02		85.1	84.4		5.49	5.45		7.36	7.38		12	
10/10/18	18:30	Cloudy	Middle	3.5	25.30	25.30	25.30	8.05	8.05	8.05	31.02	31.02	31.02	75.9	77.0	76.7	5.24	5.31	5.30	18.00	17.80	<u>17.88</u>	10	10.50
	18:31		Middle	3.5	25.30	25.30		8.05	8.05		31.02	31.02		77.1	76.9		5.32	5.31		17.68	18.03		11	
12/10/18	11:10	Fine	Middle	4.0	26.70	26.70	26.70	7.79	7.79	7.81	32.15	32.15	32.15	82.8	82.5	82.3	5.53	5.51	5.50	9.53	9.49	<u>9.46</u>	14	<u>14.50</u>
	11:12		Middle	4.0	26.70	26.70		7.82	7.82		32.15	32.15		82.0	81.9		5.48	5.48		9.43	9.40		15	
15/10/18	11:20	Cloudy	Middle	4.0	26.80	26.80	26.85	7.86	7.86	7.87	32.47	32.47	32.47	85.5	85.1	84.7	5.69	5.66	5.63	7.05	7.00	6.98	11	11.00
	11:22		Middle	4.0	26.90	26.90		7.88	7.88		32.47	32.47		84.2	83.9		5.60	5.58		6.95	6.90		11	
18/10/18	12:45	Cloudy	Middle	3.5	25.40	25.40	25.35	7.66	7.66	7.70	32.36	32.36	32.37	56.4	55.4	55.0	3.86	3.79	3.79	7.98	7.93	7.90	10	9.50
	12:47		Middle	3.5	25.30	25.30		7.73	7.73		32.38	32.38		53.2	54.8		3.77	3.74		7.85	7.83		9	
20/10/18	15:00	Cloudy	Middle	4.0	25.60	25.60	25.55	7.92	7.92	7.93	32.97	32.97	32.98	85.1	85.4	84.6	5.78	5.80	5.75	7.51	7.53	7.54	5	5.50
	15:02		Middle	4.0	25.50	25.50		7.94	7.94		32.98	32.98		84.1	83.9		5.72	5.70		7.54	7.56		6	
22/10/18	17:00	Cloudy	Middle	4.0	26.30	26.10	26.23	7.75	7.75	7.76	32.76	32.76	32.76	79.1	79.9	79.6	5.30	5.35	5.33	8.29	8.31	<u>8.31</u>	9	9.50
	17:02		Middle	4.0	26.40	26.10		7.76	7.76		32.76	32.76		79.6	79.7		5.33	5.34		8.30	8.32		10	
24/10/18	15:15	Fine	Middle	3.5	26.60	26.60	26.60	7.83	7.83	7.84	32.70	32.70	32.71	66.6	67.8	67.8	4.45	4.52	4.52	5.44	5.42	5.42	10	10.00
	15:17		Middle	3.5	26.60	26.60		7.84	7.84		32.71	32.71		68.1	68.5		4.55	4.57		5.41	5.41		10	
26/10/18	20:15	Cloudy	Middle	4.0	26.40	26.40	26.40	8.19	8.19	8.19	31.77	31.77	31.77	76.7	77.4	76.1	5.16	5.21	5.12	7.05	6.47	6.75	7	6.50
	20:16		Middle	4.0	26.40	26.40		8.19	8.19		31.77	31.77		75.7	74.4		5.09	5.00		6.95	6.54		6	

Remarks:
Single underline denotes exceedance over Action Level.
Double underline denotes exceedance over Limit Level.



**Water Monitoring Result at C7 - Windsor House
Mid-Ebb Tide**

Date	Time	Weather Condition	Sampling Depth		Water Temperature			pH			Salinity			DO Saturation			DO			Turbidity			Suspended Solids	
					°C		-		ppt		%		mg/L		NTU		mg/L							
					Value	Average	Value	Average	Value	Average	Value	Average	Value	Average	Value	Average	Value	Average	Value	Average				
28/9/18	14:25	Fine	Middle	2	28.20	28.20	28.30	7.89	7.89	7.90	31.10	31.10	30.60	76.2	77.2	76.7	5.05	5.08	5.05	9.66	9.66	9.66	4	4.50
	14:27		Middle	2	28.40	28.40		7.91	7.91		30.09	30.09		76.6	76.6		5.03	5.03		9.67	9.66		5	
2/10/18	3:45	Fine	Middle	2	28.50	28.50	28.50	8.07	8.07	8.07	30.78	30.78	30.78	75.7	77.2	76.0	4.79	4.89	4.81	1.99	1.37	1.49	2	2.00
	3:46		Middle	2	28.50	28.50		8.07	8.07		30.78	30.78		76.5	74.4		4.84	4.71		1.39	1.19		2	
4/10/18	7:35	Fine	Middle	2	26.60	26.60	26.60	7.85	7.85	7.85	30.87	30.87	30.87	65.9	66.5	65.6	4.45	4.49	4.43	4.24	4.23	4.23	4	3.50
	7:37		Middle	2	26.60	26.60		7.85	7.85		30.87	30.87		64.9	65.0		4.38	4.39		4.23	4.21		3	
6/10/18	11:53	Fine	Middle	2	27.70	27.70	27.80	7.86	7.86	7.87	31.11	31.11	31.03	57.1	56.1	56.3	3.77	3.71	3.72	12.79	12.26	12.11	19	19.50
	11:55		Middle	2	27.90	27.90		7.87	7.87		30.95	30.95		56.0	55.8		3.70	3.69		12.02	11.37		20	
8/10/18	12:30	Fine	Middle	2	28.00	28.00	28.05	7.87	7.87	7.87	31.60	31.60	31.61	74.4	74.2	74.2	4.87	4.86	4.87	3.37	3.34	3.34	6	6.00
	12:32		Middle	2	28.10	28.10		7.87	7.87		31.61	31.61		74.0	74.0		4.88	4.85		3.34	3.32		6	
10/10/18	15:20	Cloudy	Middle	2	25.80	25.80	25.75	8.20	8.20	8.19	21.16	21.16	21.16	65.9	66.8	67.0	4.77	4.83	4.83	4.93	4.95	4.95	8	7.50
	15:22		Middle	2	25.70	25.70		8.17	8.17		21.16	21.16		67.5	67.7		4.80	4.90		4.96	4.96		7	
12/10/18	13:50	Fine	Middle	2	27.70	27.70	27.70	7.84	7.84	7.85	31.71	31.71	31.71	74.0	74.1	74.2	4.88	4.89	4.89	3.27	3.28	3.27	4	4.50
	13:52		Middle	2	27.70	27.70		7.85	7.85		31.71	31.71		74.3	74.2		4.89	4.89		3.28	3.26		5	
15/10/18	3:00	Cloudy	Middle	2	25.80	25.80	25.80	7.60	7.61	7.61	31.32	31.32	31.32	78.3	78.7	78.8	5.35	5.37	5.38	1.04	1.01	1.03	2	2.00
	3:01		Middle	2	25.80	25.80		7.61	7.62		31.32	31.32		78.8	79.3		5.38	5.41		1.03	1.03		2	
18/10/18	3:38	Cloudy	Middle	2	23.70	23.70	23.70	8.23	8.23	8.23	29.90	29.90	29.90	73.5	74.2	73.6	5.24	5.29	5.25	1.04	1.08	1.05	<2	<2
	3:39		Middle	2	23.70	23.70		8.23	8.23		29.90	29.90		73.2	73.4		5.22	5.24		1.06	1.02		<2	
20/10/18	8:00	Fine	Middle	2	25.70	25.70	25.63	7.82	7.82	7.83	32.51	32.51	32.52	73.7	73.4	73.6	5.00	4.98	4.99	2.89	2.89	2.89	3	3.00
	8:02		Middle	2	25.70	25.40		7.84	7.84		32.52	32.52		73.7	73.5		5.00	4.98		2.89	2.90		3	
22/10/18	12:05	Fine	Middle	2	26.40	26.40	26.45	7.85	7.85	7.84	32.36	32.36	32.36	77.6	77.8	77.4	5.20	5.22	5.19	2.47	2.51	2.51	<2	<2
	12:07		Middle	2	26.50	26.50		7.83	7.83		32.36	32.36		76.8	77.5		5.15	5.20		2.55	2.50		<2	
24/10/18	13:15	Fine	Middle	2	26.90	26.90	26.90	7.86	7.86	7.87	32.41	32.41	32.41	79.9	79.8	79.5	5.31	5.31	5.29	1.90	1.90	1.91	9	9.00
	13:17		Middle	2	26.90	26.90		7.87	7.87		32.41	32.41		78.7	79.7		5.24	5.30		1.91	1.92		9	
26/10/18	14:50	Fine	Middle	2	26.60	26.60	26.60	7.81	7.81	7.81	31.22	31.33	31.25	63.7	63.5	63.3	4.29	4.28	4.26	3.66	3.70	3.64	3	3.00
	14:52		Middle	2	26.60	26.60		7.81	7.81		31.22	31.22		62.8	63.0		4.22	4.23		3.62	3.58		3	

Remarks:
Single underline denotes exceedance over Action Level.
Double underline denotes exceedance over Limit Level.



**Water Monitoring Result at C1 - HKCEC
Mid-Ebb Tide**

Date	Time	Weather Condition	Sampling Depth		Water Temperature			pH			Salinity			DO Saturation			DO			Turbidity			Suspended Solids	
					°C			-			ppt			%			mg/L			NTU			mg/L	
					Value	Average		Value	Average		Value	Average		Value	Average		Value	Average		Value	Average		Value	Average
28/9/18	15:45	Fine	Middle	3.0	28.80	28.80	28.70	8.02	8.02	8.03	30.23	30.23	30.23	75.8	76.9	77.1	4.97	5.04	5.07	4.91	4.87	4.89	7	7.50
	15:47		Middle	3.0	28.60	28.60		8.03	8.03		30.22	30.22		77.7	77.9		5.09	5.16		4.85	4.93		8	
2/10/18	5:13	Fine	Middle	3.0	28.20	28.20	28.20	8.15	8.15	8.15	31.47	31.47	31.47	82.0	83.3	82.0	5.18	5.26	5.18	7.83	7.92	7.88	5	5.00
	5:14		Middle	3.0	28.20	28.20		8.15	8.15		31.47	31.47		81.7	80.8		5.16	5.11		7.86	7.90		5	
4/10/18	9:40	Fine	Middle	3.0	26.40	26.40	26.45	7.94	7.94	7.94	31.32	31.32	31.32	77.8	77.5	78.1	5.26	5.24	5.28	4.71	4.68	4.70	8	7.50
	9:42		Middle	3.0	26.50	26.50		7.94	7.94		31.32	31.32		78.8	78.4		5.33	5.30		4.69	4.72		7	
6/10/18	11:02	Fine	Middle	2.5	27.50	27.50	27.50	8.00	8.00	8.00	31.91	31.91	31.95	64.5	63.8	62.9	4.26	4.21	4.15	6.37	6.28	6.18	12	11.00
	11:04		Middle	2.5	27.50	27.50		8.00	8.00		31.98	31.98		62.4	60.8		4.12	4.01		6.03	6.04		10	
8/10/18	10:25	Fine	Middle	3.0	27.30	27.30	27.30	8.02	8.02	8.02	32.37	32.37	32.38	82.1	82.5	82.3	5.43	5.46	5.45	7.41	7.38	7.37	11	11.50
	10:27		Middle	3.0	27.30	27.30		8.02	8.02		32.38	32.38		82.3	82.3		5.46	5.44		7.36	7.34		12	
10/10/18	14:20	Cloudy	Middle	2.5	26.50	26.50	26.45	8.15	8.15	8.15	29.53	29.53	29.53	74.4	75.0	74.6	5.10	5.11	5.09	7.14	7.26	7.20	11	11.50
	14:22		Middle	2.5	26.40	26.40		8.14	8.14		29.53	29.53		74.4	74.6		5.06	5.10		7.19	7.19		12	
12/10/18	15:05	Fine	Middle	3.0	26.20	26.20	26.20	8.00	8.00	8.00	32.35	32.35	32.35	78.1	78.3	78.4	5.26	5.26	5.28	7.68	7.69	7.69	10	10.00
	15:07		Middle	3.0	26.20	26.20		8.00	8.00		32.35	32.35		78.5	78.5		5.29	5.29		7.70	7.70		10	
15/10/18	4:58	Cloudy	Middle	3.0	25.70	25.70	25.70	8.21	8.21	8.21	32.24	32.24	32.24	81.4	80.9	81.4	5.54	5.51	5.54	4.47	4.96	4.80	6	14.50
	4:59		Middle	3.0	25.70	25.70		8.21	8.21		32.24	32.24		81.8	81.4		5.56	5.54		5.13	4.65		23	
18/10/18	7:52	Cloudy	Middle	2.5	24.70	24.70	24.70	8.24	8.24	8.24	32.04	32.04	32.04	72.9	72.3	71.7	5.06	5.02	4.98	1.20	1.18	1.23	2	2.50
	7:53		Middle	2.5	24.70	24.70		8.24	8.24		32.04	32.04		70.3	71.4		4.88	4.95		1.28	1.26		3	
20/10/18	10:25	Fine	Middle	2.5	25.40	25.40	25.40	8.01	8.01	8.01	33.21	33.21	33.21	81.7	81.6	81.9	5.55	5.54	5.57	6.26	6.25	6.25	4	4.50
	10:27		Middle	2.5	25.40	25.40		8.01	8.01		33.21	33.21		82.1	82.2		5.58	5.61		6.23	6.25		5	
22/10/18	11:20	Fine	Middle	2.5	25.70	25.70	25.70	7.91	7.91	7.91	33.05	33.05	33.05	81.2	82.5	81.7	5.49	5.59	5.53	6.09	6.07	6.07	6	5.50
	11:22		Middle	2.5	25.70	25.70		7.91	7.91		33.05	33.05		81.4	81.5		5.51	5.51		6.06	6.04		5	
24/10/18	11:15	Fine	Middle	3.0	26.00	26.00	26.00	7.97	7.97	7.95	32.95	32.95	32.94	79.5	80.0	79.4	5.36	5.39	5.38	6.26	6.33	6.33	11	10.50
	11:17		Middle	3.0	26.00	26.00		7.92	7.92		32.92	32.92		79.7	78.2		5.37	5.38		6.35	6.37		10	
26/10/18	14:25	Fine	Middle	2.5	26.30	26.30	26.30	7.88	7.88	7.88	32.32	32.32	32.32	76.5	78.0	78.0	5.14	5.26	5.25	3.60	3.59	3.57	3	3.50
	14:27		Middle	2.5	26.30	26.30		7.88	7.88		32.32	32.32		78.6	78.8		5.28	5.30		3.56	3.54		4	

Remarks:
Single underline denotes exceedance over Action Level.
Double underline denotes exceedance over Limit Level.



**Water Monitoring Result at P1 - HKCEC Phase I
Mid-Ebb Tide**

Date	Time	Weather Condition	Sampling Depth		Water Temperature			pH			Salinity			DO Saturation		DO		Turbidity		Suspended Solids				
					°C		-		ppt		%		mg/L		NTU		mg/L							
					Value	Average	Value	Average	Value	Average	Value	Average	Value	Average	Value	Average	Value	Average	Value	Average				
28/9/18	15:30	Fine	Middle	3.0	27.70	27.70	27.70	8.04	8.04	8.04	30.24	30.24	30.24	78.1	78.2	78.3	5.19	5.19	5.20	4.70	4.68	4.68	7	6.50
	15:32		Middle	3.0	27.70	27.70		8.04	8.04		30.24	30.24		78.3	78.5		5.20	5.22		4.67	4.66		6	
2/10/18	4:45	Fine	Middle	3.0	28.80	28.80	28.80	8.15	8.15	8.15	31.46	31.46	31.46	73.5	78.7	76.4	4.55	4.87	4.73	8.00	7.95	7.77	4	4.00
	4:46		Middle	3.0	28.80	28.80		8.15	8.15		31.46	31.46		79.2	74.0		4.91	4.59		7.50	7.64		4	
4/10/18	9:20	Fine	Middle	3.0	26.40	26.40	26.45	7.91	7.91	7.91	31.36	31.36	31.36	84.1	84.2	84.1	5.60	5.60	5.64	5.20	5.18	5.18	5	5.50
	9:22		Middle	3.0	26.50	26.50		7.91	7.91		31.36	31.36		84.1	84.0		5.67	5.67		5.17	5.16		6	
6/10/18	10:46	Fine	Middle	2.5	27.30	27.30	27.35	7.93	7.93	7.94	31.98	31.98	31.96	55.4	55.8	55.7	3.66	3.69	3.68	4.95	5.08	5.03	12	11.50
	10:48		Middle	2.5	27.40	27.40		7.95	7.95		31.94	31.94		55.8	55.7		3.69	3.69		5.08	5.00		11	
8/10/18	10:05	Fine	Middle	3.0	27.30	27.30	27.30	7.93	7.93	7.94	32.39	32.39	32.39	80.6	80.1	81.1	5.33	5.29	5.36	8.23	8.15	8.18	12	12.00
	10:07		Middle	3.0	27.30	27.30		7.94	7.94		32.39	32.39		81.5	82.2		5.39	5.43		8.16	8.16		12	
10/10/18	14:00	Cloudy	Middle	2.5	25.90	25.90	25.80	8.13	8.13	8.14	30.07	30.07	30.07	68.2	68.7	70.5	4.69	4.72	4.84	7.84	7.80	7.79	11	11.00
	14:02		Middle	2.5	25.70	25.70		8.14	8.14		30.07	30.07		72.6	72.6		4.93	5.00		7.78	7.75		11	
12/10/18	14:45	Fine	Middle	3.0	26.60	26.60	26.60	7.93	7.93	7.94	32.40	32.40	32.41	79.7	79.8	80.1	5.34	5.35	5.37	6.70	6.69	6.69	22	22.00
	14:47		Middle	3.0	26.60	26.60		7.95	7.95		32.41	32.41		80.3	80.5		5.38	5.39		6.68	6.68		22	
15/10/18	4:32	Cloudy	Middle	3.0	25.70	25.70	25.70	8.24	8.24	8.24	32.02	32.02	32.02	82.4	81.6	81.9	5.62	5.58	5.60	5.54	5.69	5.69	8	6.50
	4:33		Middle	3.0	25.70	25.70		8.24	8.24		32.02	32.02		81.3	82.2		5.57	5.63		5.85	5.66		5	
18/10/18	5:10	Cloudy	Middle	3.0	24.10	24.10	24.10	8.30	8.30	8.30	32.24	32.24	32.24	76.2	79.7	78.6	5.32	5.57	5.49	1.91	1.52	1.58	3	2.50
	5:11		Middle	3.0	24.10	24.10		8.30	8.30		32.24	32.24		79.1	79.5		5.52	5.55		1.43	1.46		2	
20/10/18	10:05	Fine	Middle	2.5	25.10	25.10	25.10	7.93	7.93	7.94	33.21	33.21	33.22	83.8	83.9	83.5	5.72	5.72	5.69	6.03	6.03	6.04	7	6.50
	10:07		Middle	2.5	25.10	25.10		7.95	7.95		33.22	33.22		82.8	83.3		5.65	5.68		6.04	6.07		6	
22/10/18	11:00	Fine	Middle	2.5	26.20	26.20	26.25	7.84	7.84	7.85	33.06	33.06	33.06	83.2	83.9	83.2	5.58	5.62	5.58	4.55	4.51	4.52	6	5.50
	11:02		Middle	2.5	26.30	26.30		7.85	7.85		33.06	33.06		83.1	82.6		5.57	5.54		4.51	4.52		5	
24/10/18	10:55	Fine	Middle	3.0	26.10	26.10	26.15	7.85	7.85	7.86	32.99	32.99	32.99	78.2	79.0	78.6	5.26	5.31	5.31	5.41	5.41	5.41	11	10.50
	10:57		Middle	3.0	26.20	26.20		7.87	7.87		32.99	32.99		77.8	79.3		5.32	5.33		5.42	5.41		10	
26/10/18	14:05	Fine	Middle	2.5	26.90	26.90	26.90	7.79	7.79	7.80	32.49	32.49	32.49	85.8	85.7	85.7	5.71	5.71	5.70	3.94	3.93	3.94	3	3.50
	14:07		Middle	2.5	26.90	26.90		7.80	7.80		32.49	32.49		85.7	85.4		5.70	5.68		3.93	3.94		4	

Remarks:
Single underline denotes exceedance over Action Level.
Double underline denotes exceedance over Limit Level.



**Water Monitoring Result at P3 - APA
Mid-Ebb Tide**

Date	Time	Weather Condition	Sampling Depth		Water Temperature			pH			Salinity		DO Saturation		DO		Turbidity		Suspended Solids					
					°C		-		ppt		%		mg/L		NTU		mg/L							
					Value	Average	Value	Average	Value	Average	Value	Average	Value	Average	Value	Average	Value	Average	Value	Average				
28/9/18	15:35	Fine	Middle	3.0	27.40	27.40	27.40	8.05	8.05	8.05	30.18	30.18	30.17	84.5	84.8	85.4	5.64	5.66	5.71	4.67	4.68	4.69	6	6.00
	15:37		Middle	3.0	27.40	27.40		8.05	8.05	8.05	30.16	30.16		86.2	86.2		5.76	5.76		4.69	4.70		6	
2/10/18	4:52	Fine	Middle	3.0	28.80	28.80	28.80	8.15	8.15	8.15	31.46	31.46	31.46	77.8	80.7	79.5	4.81	4.96	4.91	7.83	7.81	7.78	5	5.00
	4:53		Middle	3.0	28.80	28.80		8.15	8.15	8.15	31.46	31.46		79.9	79.4		4.95	4.93		7.76	7.73		5	
4/10/18	9:25	Fine	Middle	3.0	26.10	26.10	26.10	7.92	7.92	7.94	31.32	31.32	31.32	78.8	79.6	79.4	5.35	5.40	5.39	5.14	5.14	5.12	4	4.50
	9:27		Middle	3.0	26.10	26.10		7.95	7.95	7.94	31.31	31.31		78.9	80.2		5.35	5.45		5.11	5.10		5	
6/10/18	10:50	Fine	Middle	2.5	27.50	27.50	27.50	7.98	7.98	7.99	31.99	31.99	31.99	68.2	66.8	65.3	4.51	4.42	4.32	9.33	9.34	9.35	12	12.50
	10:52		Middle	2.5	27.50	27.50		7.99	7.99	7.99	31.99	31.99		63.9	62.4		4.22	4.12		9.36	9.36		13	
8/10/18	10:10	Fine	Middle	3.0	26.90	26.90	26.90	8.00	8.00	8.00	32.39	32.39	32.39	81.9	82.2	82.4	5.45	5.47	5.48	8.09	8.00	8.02	10	10.00
	10:12		Middle	3.0	26.90	26.90		8.00	8.00	8.00	32.39	32.39		82.7	82.8		5.50	5.51		8.00	7.99		10	
10/10/18	14:05	Cloudy	Middle	2.5	26.00	26.00	25.95	8.14	8.14	8.14	30.00	30.00	30.00	74.6	74.8	75.2	5.12	5.13	5.17	7.54	7.53	7.55	13	13.50
	14:07		Middle	2.5	25.90	25.90		8.14	8.14	8.14	30.00	30.00		75.6	75.9		5.20	5.21		7.58	7.56		14	
12/10/18	14:50	Fine	Middle	3.0	25.90	25.90	25.95	7.96	7.96	7.97	32.33	32.33	32.33	77.3	77.3	78.3	5.23	5.23	5.29	6.45	6.46	6.46	11	11.50
	14:52		Middle	3.0	26.00	26.00		7.97	7.97	7.97	32.32	32.32		79.4	79.0		5.37	5.34		6.46	6.46		12	
15/10/18	4:37	Cloudy	Middle	3.0	25.70	25.70	25.70	8.26	8.26	8.26	32.26	32.26	32.26	76.8	79.5	77.4	5.23	5.42	5.27	4.89	4.44	4.76	5	4.50
	4:38		Middle	3.0	25.70	25.70		8.26	8.26	8.26	32.26	32.26		76.1	77.2		5.18	5.26		4.87	4.83		4	
18/10/18	5:16	Cloudy	Middle	3.0	24.10	24.10	24.10	8.31	8.31	8.31	25.25	32.25	30.50	75.8	78.3	77.1	5.29	5.47	5.39	2.67	2.29	2.30	3	2.50
	5:17		Middle	3.0	24.10	24.10		8.31	8.31	8.31	32.25	32.25		77.1	77.2		5.39	5.40		2.09	2.14		2	
20/10/18	10:10	Fine	Middle	2.5	25.10	25.10	25.10	7.97	7.97	7.98	33.20	33.20	33.20	83.3	82.4	82.8	5.69	5.63	5.66	5.76	5.73	5.70	5	5.50
	10:12		Middle	2.5	25.10	25.10		7.98	7.98	7.98	33.20	33.20		82.5	83.0		5.64	5.66		5.64	5.68		6	
22/10/18	11:05	Fine	Middle	2.5	25.90	25.90	25.90	7.86	7.86	7.87	33.02	33.02	33.03	79.3	79.9	80.0	5.35	5.40	5.40	4.68	4.69	4.67	4	4.00
	11:07		Middle	2.5	25.90	25.90		7.87	7.87	7.87	33.03	33.03		80.3	80.4		5.41	5.42		4.66	4.66		4	
24/10/18	11:00	Fine	Middle	3.0	25.70	25.70	25.70	7.80	7.80	7.80	32.97	32.97	32.98	79.2	79.3	79.8	5.36	5.37	5.40	5.30	5.28	5.28	9	9.50
	11:02		Middle	3.0	25.70	25.70		7.80	7.80	7.80	32.98	32.98		80.1	80.4		5.42	5.44		5.27	5.28		10	
26/10/18	14:10	Fine	Middle	2.5	26.50	26.50	26.50	7.82	7.82	7.83	32.42	32.42	32.43	81.4	81.9	81.8	5.45	5.49	5.48	3.90	3.90	3.92	4	3.50
	14:12		Middle	2.5	26.50	26.50		7.83	7.83	7.83	32.43	32.43		81.9	81.9		5.49	5.49		3.93	3.96		3	

Remarks:
Single underline denotes exceedance over Action Level.
Double underline denotes exceedance over Limit Level.



**Water Monitoring Result at P4 - SOC
Mid-Ebb Tide**

Date	Time	Weather Condition	Sampling Depth		Water Temperature			pH			Salinity			DO Saturation		DO		Turbidity		Suspended Solids				
					°C			-			ppt			%		mg/L		NTU		mg/L				
					Value	Average		Value	Average		Value	Average		Value	Average		Value	Average	Value	Average	Value	Average	Value	Average
28/9/18	-	Fine	Middle	-	-	-	-	-	-	-	-	-	-	-	-	-	-	-	-	-	-	-		
	-		Middle	-	-	-	-	-	-	-	-	-	-	-	-	-	-	-	-	-	-	-	-	
2/10/18	5:02	Fine	Middle	3.0	28.00	28.00	28.00	8.16	8.16	8.16	31.46	31.46	31.46	78.6	78.9	79.3	4.92	4.94	4.97	7.26	7.38	7.36	5	5.00
	5:03		Middle	3.0	28.00	28.00	28.00	8.16	8.16	8.16	31.46	31.46	31.46	80.7	79.0	79.3	5.05	4.98	4.97	7.14	7.65	7.36	5	5.00
4/10/18	9:30	Fine	Middle	3.0	26.30	26.30	26.30	7.95	7.95	7.95	31.30	31.30	31.30	80.4	80.4	80.8	5.44	5.44	5.47	4.94	4.95	4.93	5	5.00
	9:32		Middle	3.0	26.30	26.30	26.30	7.94	7.94	7.95	31.30	31.30	31.30	81.1	81.3	80.8	5.49	5.51	5.47	4.95	4.88	4.93	5	5.00
6/10/18	10:54	Fine	Middle	2.5	27.50	27.50	27.50	7.99	7.99	8.00	31.93	31.93	31.96	67.8	65.8	65.2	4.48	4.35	4.30	5.80	6.00	5.79	10	9.50
	10:56		Middle	2.5	27.50	27.50	27.50	8.00	8.00	8.00	31.99	31.99	31.96	63.9	63.1	65.2	4.22	4.16	4.30	5.71	5.66	5.79	9	9.50
8/10/18	10:15	Fine	Middle	3.0	27.00	27.00	27.00	8.01	8.01	8.01	32.37	32.37	32.38	80.2	80.0	79.9	5.33	5.32	5.31	7.75	7.80	7.78	9	9.50
	10:17		Middle	3.0	27.00	27.00	27.00	8.01	8.01	8.01	32.38	32.38	32.38	80.0	79.4	79.9	5.32	5.27	5.31	7.78	7.78	7.78	10	9.50
10/10/18	14:10	Cloudy	Middle	2.5	26.00	26.00	26.10	8.15	8.15	8.15	29.86	29.86	29.87	75.5	75.8	75.9	5.16	5.18	5.19	7.52	7.51	7.51	10	10.00
	14:12		Middle	2.5	26.20	26.20	26.10	8.15	8.15	8.15	29.87	29.87	29.87	76.1	76.3	75.9	5.20	5.22	5.19	7.51	7.51	7.51	10	10.00
12/10/18	14:55	Fine	Middle	3.0	26.00	26.00	26.00	7.99	7.99	7.99	32.29	32.29	32.29	76.7	76.8	76.9	5.19	5.20	5.20	6.00	6.00	5.99	12	11.50
	14:57		Middle	3.0	26.00	26.00	26.00	7.99	7.99	7.99	32.29	32.29	32.29	76.9	77.0	76.9	5.20	5.21	5.20	5.99	5.98	5.99	11	11.50
15/10/18	4:45	Cloudy	Middle	3.0	25.60	25.60	25.60	8.27	8.27	8.27	32.25	32.25	32.25	81.4	81.1	81.2	5.55	5.53	5.54	4.72	4.28	4.39	9	7.00
	4:46		Middle	3.0	25.60	25.60	25.60	8.27	8.27	8.27	32.25	32.25	32.25	80.6	81.8	81.2	5.49	5.57	5.54	4.32	4.25	4.39	5	7.00
18/10/18	5:23	Cloudy	Middle	3.0	24.30	24.30	24.30	8.33	8.33	8.33	32.29	32.29	32.29	77.6	77.2	77.9	5.40	5.37	5.42	2.67	2.69	2.45	3	3.00
	5:24		Middle	3.0	24.30	24.30	24.30	8.33	8.33	8.33	32.29	32.29	32.29	77.8	78.9	77.9	5.42	5.49	5.42	2.16	2.28	2.45	3	3.00
20/10/18	10:15	Fine	Middle	2.5	25.20	25.20	25.20	7.99	7.99	7.99	33.21	33.21	33.21	79.6	79.2	79.4	5.43	5.41	5.42	6.22	6.17	6.18	6	6.00
	10:17		Middle	2.5	25.20	25.20	25.20	7.99	7.99	7.99	33.21	33.21	33.21	79.2	79.4	79.4	5.40	5.42	5.42	6.16	6.17	6.18	6	6.00
22/10/18	11:10	Fine	Middle	2.5	25.80	25.80	25.80	7.88	7.88	7.88	33.04	33.04	33.04	79.7	80.4	80.6	5.39	5.43	5.44	5.91	5.99	5.94	4	4.00
	11:12		Middle	2.5	25.80	25.80	25.80	7.88	7.88	7.88	33.04	33.04	33.04	80.6	81.5	80.6	5.44	5.51	5.44	5.92	5.93	5.94	4	4.00
24/10/18	11:05	Fine	Middle	3.0	25.50	25.50	25.50	7.89	7.89	7.90	32.97	32.97	32.98	78.5	78.7	78.6	5.34	5.35	5.34	5.06	5.00	5.01	10	9.00
	11:07		Middle	3.0	25.50	25.50	25.50	7.90	7.90	7.90	32.98	32.98	32.98	78.5	78.6	78.6	5.32	5.34	5.34	4.99	4.97	5.01	8	9.00
26/10/18	14:15	Fine	Middle	2.5	26.30	26.30	26.30	7.85	7.85	7.86	32.37	32.37	32.37	81.6	82.3	82.3	5.48	5.53	5.53	3.37	3.35	3.37	2	2.00
	14:17		Middle	2.5	26.30	26.30	26.30	7.86	7.86	7.86	32.37	32.37	32.37	82.7	82.5	82.3	5.56	5.55	5.53	3.37	3.38	3.37	2	2.00

Remarks:
Single underline denotes exceedance over Action Level.
Double underline denotes exceedance over Limit Level.



**Water Monitoring Result at P5 - WCT / RT / IT
Mid-Ebb Tide**

Date	Time	Weater Condition	Sampling Depth		Water Temperature		pH			Salinity		DO Saturation		DO		Turbidity		Suspended Solids						
					°C		-		ppt		%		mg/L		NTU		mg/L							
			m	Value	Average	Value	Average	Value	Average	Value	Average	Value	Average	Value	Average	Value	Average	Value	Average					
28/9/18	-	Fine	Middle	-	-	-	-	-	-	-	-	-	-	-	-	-	-	-	-	-				
	-		Middle	-	-	-	-	-	-	-	-	-	-	-	-	-	-	-	-	-				
2/10/18	5:08	Fine	Middle	3.0	28.20	28.20	28.20	8.15	8.15	8.15	31.48	31.48	31.48	72.1	77.4	76.3	4.43	4.76	4.69	7.48	7.27	7.50	5	5.00
	5:09		Middle	3.0	28.20	28.20	28.20	8.15	8.15	8.15	31.48	31.48	31.48	78.3	77.4	76.3	4.81	4.76	4.69	7.71	7.53	7.50	5	5.00
4/10/18	9:35	Fine	Middle	3.0	26.50	26.50	26.45	7.94	7.94	7.94	31.29	31.29	31.29	73.3	73.6	73.6	4.98	4.97	4.98	4.77	4.77	4.77	4	4.00
	9:37		Middle	3.0	26.40	26.40	26.45	7.94	7.94	7.94	31.29	31.29	31.29	74.0	73.5	73.6	5.00	4.95	4.98	4.77	4.76	4.77	4	4.00
6/10/18	10:58	Fine	Middle	2.5	27.20	27.20	27.20	8.00	8.00	8.00	31.49	31.49	31.75	65.2	63.9	62.7	4.33	4.18	4.15	5.82	5.83	5.86	10	10.50
	11:00		Middle	2.5	27.20	27.20	27.20	7.99	7.99	8.00	32.01	32.01	31.75	60.4	61.2	62.7	4.01	4.07	4.15	5.94	5.86	5.86	11	10.50
8/10/18	10:20	Fine	Middle	3.0	27.00	27.00	27.00	8.01	8.01	8.02	32.38	32.38	32.38	79.1	78.5	78.9	5.26	5.21	5.24	7.64	7.70	7.67	10	10.00
	10:22		Middle	3.0	27.00	27.00	27.00	8.02	8.02	8.02	32.38	32.38	32.38	78.9	78.9	78.9	5.25	5.25	5.24	7.66	7.68	7.67	10	10.00
10/10/18	14:15	Cloudy	Middle	2.5	26.30	26.30	26.30	8.14	8.14	8.14	29.99	29.99	29.99	75.9	75.9	76.1	5.17	5.17	5.20	7.35	7.37	7.34	10	10.00
	14:17		Middle	2.5	26.30	26.30	26.30	8.14	8.14	8.14	29.99	29.99	29.99	76.0	76.5	76.1	5.24	5.22	5.20	7.33	7.32	7.34	10	10.00
12/10/18	15:00	Fine	Middle	3.0	26.00	26.00	26.00	8.00	8.00	8.00	32.30	32.30	32.30	78.1	78.1	78.2	5.28	5.29	5.29	7.65	7.66	7.67	10	10.00
	15:02		Middle	3.0	26.00	26.00	26.00	8.00	8.00	8.00	32.30	32.30	32.30	78.2	78.2	78.2	5.29	5.29	5.29	7.67	7.68	7.67	10	10.00
15/10/18	4:52	Cloudy	Middle	3.0	25.60	25.60	25.60	8.28	8.28	8.28	32.26	32.26	32.26	76.5	78.5	77.0	5.21	5.35	5.25	5.45	5.96	5.71	6	9.00
	4:53		Middle	3.0	25.60	25.60	25.60	8.28	8.28	8.28	32.26	32.26	32.26	76.6	76.3	77.0	5.22	5.20	5.25	5.95	5.47	5.71	12	9.00
18/10/18	5:32	Cloudy	Middle	3.0	24.40	24.40	24.40	8.34	8.34	8.34	32.27	32.27	32.27	74.4	74.9	74.4	5.17	5.20	5.17	1.88	1.99	1.93	3	2.50
	5:33		Middle	3.0	24.40	24.40	24.40	8.34	8.34	8.34	32.27	32.27	32.27	74.5	73.7	74.4	5.18	5.13	5.17	1.97	1.86	1.93	2	2.50
20/10/18	10:20	Fine	Middle	2.5	25.20	25.20	25.20	8.00	8.00	8.00	33.31	33.31	33.31	78.8	79.3	79.9	5.37	5.41	5.44	7.18	7.14	7.16	8	7.50
	10:22		Middle	2.5	25.20	25.20	25.20	8.00	8.00	8.00	33.31	33.31	33.31	80.6	80.7	79.9	5.49	5.50	5.44	7.13	7.18	7.16	7	7.50
22/10/18	11:15	Fine	Middle	2.5	25.80	25.80	25.80	7.90	7.90	7.90	33.04	33.04	33.05	81.3	81.7	81.6	5.49	5.52	5.52	6.82	6.81	6.81	6	6.00
	11:17		Middle	2.5	25.80	25.80	25.80	7.90	7.90	7.90	33.05	33.05	33.05	81.5	81.9	81.6	5.51	5.54	5.52	6.80	6.80	6.81	6	6.00
24/10/18	11:10	Fine	Middle	3.0	25.80	25.80	25.75	7.91	7.91	7.91	32.96	32.96	32.71	76.9	77.5	77.7	5.20	5.24	5.26	6.34	6.37	6.32	10	10.00
	11:12		Middle	3.0	25.70	25.70	25.75	7.91	7.91	7.91	32.46	32.46	32.71	78.2	78.2	77.7	5.29	5.29	5.26	6.30	6.28	6.32	10	10.00
26/10/18	14:20	Fine	Middle	2.5	26.30	26.30	26.30	7.87	7.87	7.88	32.34	32.34	32.35	76.7	76.4	76.3	5.16	5.14	5.13	3.40	3.40	3.41	4	4.00
	14:22		Middle	2.5	26.30	26.30	26.30	7.88	7.88	7.88	32.35	32.35	32.35	75.9	76.0	76.3	5.10	5.11	5.13	3.40	3.42	3.41	4	4.00

Remarks:
Single underline denotes exceedance over Action Level.
Double underline denotes exceedance over Limit Level.



**Water Monitoring Result at RW21-P789 - GEC / CRB / SHK
Mid-Ebb Tide**

Date	Time	Weather Condition	Sampling Depth		Water Temperature °C			pH			Salinity ppt			DO Saturation %			DO mg/L			Turbidity NTU			Suspended Solids mg/L	
			m		Value	Average	Value	Average	Value	Average	Value	Average	Value	Average	Value	Average	Value	Average	Value	Average	Value	Average	Value	Average
28/9/18	13:45	Fine	Middle	3.5	28.70	28.70	28.80	7.84	7.84	7.86	31.23	31.23	31.23	80.5	80.1	80.4	5.22	5.19	5.21	15.31	15.28	<u>15.29</u>	6	6.00
	13:47		Middle	3.5	28.90	28.90		7.88	7.88		31.23	31.23		80.4	80.4		5.21	5.21		15.28	15.28		6	
2/10/18	4:24	Fine	Middle	4.0	28.80	28.80	28.80	8.12	8.12	8.12	31.34	31.34	31.34	77.4	79.4	78.4	4.86	4.99	4.93	2.89	2.79	2.56	5	4.00
	4:25		Middle	4.0	28.80	28.80		8.12	8.12		31.34	31.34		77.5	79.4		4.87	4.99		2.32	2.24		3	
4/10/18	7:15	Fine	Middle	4.0	26.80	26.80	26.75	7.79	7.79	7.82	31.89	31.89	31.90	73.9	75.3	74.4	4.95	5.04	4.98	4.78	4.78	4.78	4	4.00
	7:17		Middle	4.0	26.70	26.70		7.85	7.85		31.90	31.90		74.1	74.2		4.96	4.97		4.77	4.77		4	
6/10/18	11:24	Fine	Middle	3.5	27.50	27.50	27.55	8.00	8.00	8.00	32.11	32.11	32.09	56.8	55.4	55.7	3.75	3.65	3.67	5.83	5.71	5.75	12	11.50
	11:26		Middle	3.5	27.60	27.60		8.00	8.00		32.07	32.07		54.1	56.5		3.57	3.72		5.72	5.75		11	
8/10/18	11:10	Fine	Middle	4.0	28.00	28.00	28.05	7.90	7.90	7.91	32.49	32.49	32.50	84.9	85.1	84.7	5.54	5.55	5.52	5.81	5.82	5.81	6	6.50
	11:12		Middle	4.0	28.10	28.10		7.92	7.92		32.50	32.50		84.6	84.2		5.51	5.49		5.81	5.81		7	
10/10/18	15:00	Cloudy	Middle	3.5	26.50	26.50	26.45	8.17	8.17	8.18	26.32	26.32	26.33	74.9	75.1	75.2	5.20	5.21	5.23	5.84	5.83	5.83	15	<u>14.50</u>
	15:02		Middle	3.5	26.40	26.40		8.18	8.18		26.33	26.33		75.4	75.5		5.24	5.26		5.82	5.82		14	
12/10/18	15:30	Fine	Middle	4.0	26.50	26.50	26.45	7.98	7.98	7.99	32.28	32.28	32.31	81.3	82.1	81.9	5.48	5.51	5.50	6.15	6.14	6.20	12	12.00
	15:32		Middle	4.0	26.40	26.40		7.99	7.99		32.33	32.33		82.2	81.9		5.52	5.50		6.25	6.27		12	
15/10/18	5:35	Cloudy	Middle	3.5	25.60	25.60	25.60	8.07	8.07	8.07	31.86	31.86	31.86	83.1	81.9	82.2	5.68	5.59	5.61	2.85	2.43	2.53	3	3.00
	5:36		Middle	3.5	25.60	25.60		8.07	8.07		31.86	31.86		81.1	82.7		5.54	5.64		2.22	2.60		3	
18/10/18	4:09	Cloudy	Middle	4.0	23.90	23.90	23.90	8.20	8.20	8.20	32.15	32.15	32.15	71.1	74.0	73.2	4.99	5.19	5.14	1.11	1.14	1.14	<2	<2
	4:10		Middle	4.0	23.90	23.90		8.20	8.20		32.15	32.15		74.5	73.3		5.23	5.15		1.17	1.15		<2	
20/10/18	7:50	Fine	Middle	4.0	25.70	25.70	25.70	7.69	7.69	7.73	33.20	33.20	33.20	82.4	81.3	80.4	5.57	5.50	5.43	5.84	5.82	5.81	5	4.50
	7:52		Middle	4.0	25.70	25.70		7.76	7.76		33.19	33.19		79.1	78.8		5.33	5.31		5.79	5.80		4	
22/10/18	11:50	Fine	Middle	3.5	26.30	26.30	26.30	7.89	7.89	7.90	32.94	32.94	32.94	84.0	84.1	83.9	5.63	5.64	5.63	4.29	4.27	4.27	<2	<2
	11:52		Middle	3.5	26.30	26.30		7.90	7.90		32.94	32.94		83.9	83.7		5.62	5.61		4.26	4.24		<2	
24/10/18	11:45	Fine	Middle	4.0	26.10	26.10	26.10	7.93	7.93	7.93	32.93	32.93	32.93	79.0	79.6	79.5	5.31	5.35	5.34	4.70	4.71	4.69	9	9.00
	11:47		Middle	4.0	26.10	26.10		7.93	7.93		32.92	32.92		79.6	79.7		5.35	5.36		4.68	4.67		9	
26/10/18	14:35	Fine	Middle	3.5	26.70	26.70	26.70	7.86	7.86	7.87	32.60	32.60	32.60	79.4	79.6	79.5	5.30	5.31	5.32	5.08	5.13	5.14	8	8.00
	14:37		Middle	3.5	26.70	26.70		7.87	7.87		32.60	32.60		79.1	79.7		5.31	5.34		5.16	5.17		8	

Remarks:
Single underline denotes exceedance over Action Level.
Double underline denotes exceedance over Limit Level.



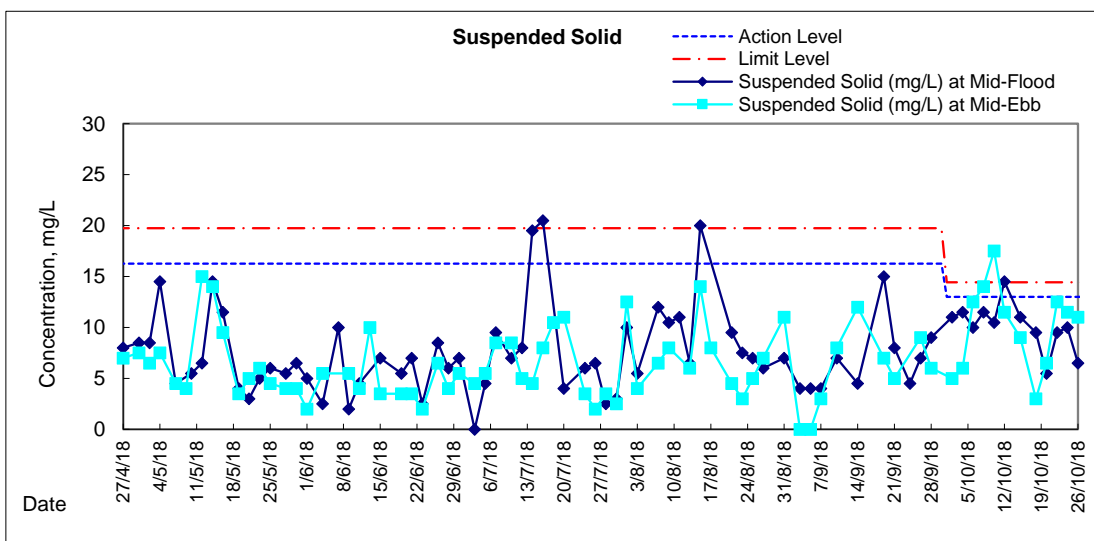
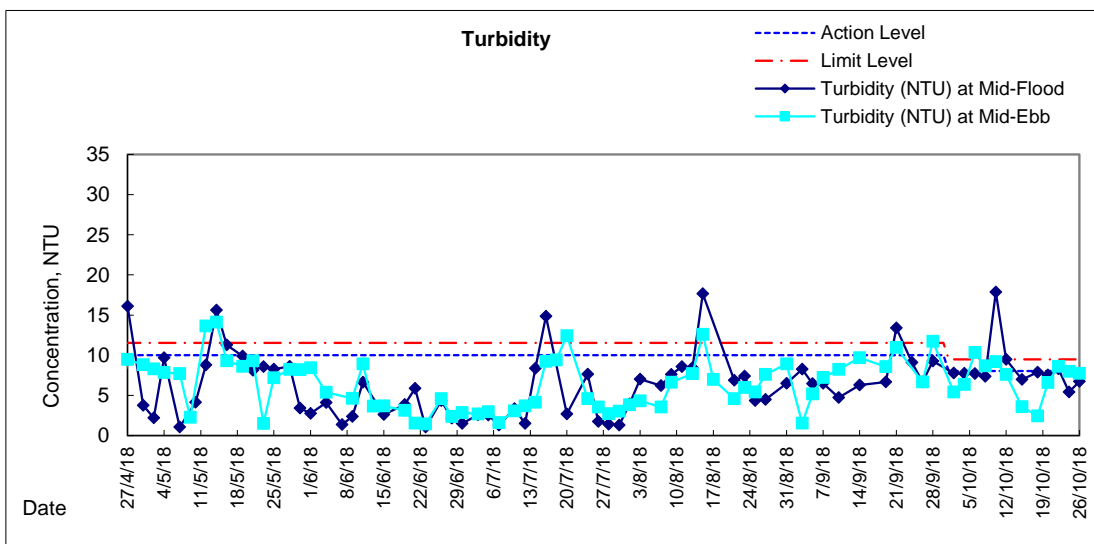
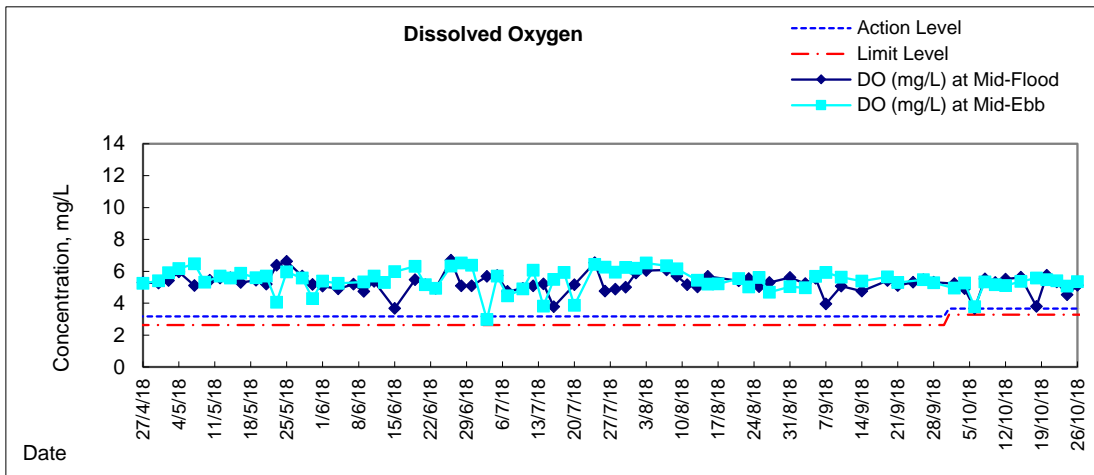
**Water Monitoring Result at WSD19 - Sheung Wan
Mid-Ebb Tide**

Date	Time	Weater Condition	Sampling Depth		Water Temperature		pH		Salinity		DO Saturation		DO		Turbidity		Suspended Solids							
					°C		-		ppt		%		mg/L		NTU		mg/L							
			m	Value	Average	Value	Average	Value	Average	Value	Average	Value	Average	Value	Average	Value	Average	Value	Average					
28/9/18	14:50	Fine	Middle	4.0	28.60	28.60	28.65	7.93	7.93	7.94	29.81	29.81	29.81	80.8	80.8	80.6	5.30	5.30	5.29	11.72	11.71	<u>11.72</u>	6	6.00
	14:52		Middle	4.0	28.70	28.70		7.95	7.95		29.81	29.81		80.4	80.4		5.27	5.27		11.72	11.72		6	
2/10/18	5:28	Fine	Middle	4.0	28.70	28.70	28.70	8.09	8.09	8.09	31.02	31.02	31.02	77.3	77.3	75.9	4.87	4.87	4.94	5.44	5.53	5.44	5	5.00
	5:29		Middle	4.0	28.70	28.70		8.09	8.09		31.02	31.02		78.2	70.8		4.93	5.09		5.11	5.67		5	
4/10/18	8:15	Fine	Middle	4.0	26.80	26.80	26.75	7.87	7.87	7.88	31.04	31.04	31.05	78.4	78.2	78.3	5.27	5.28	5.27	6.36	6.34	6.35	6	6.00
	8:17		Middle	4.0	26.70	26.70		7.88	7.88		31.05	31.05		78.2	78.2		5.26	5.26		6.32	6.36		6	
6/10/18	9:45	Fine	Middle	3.5	26.60	26.60	26.60	7.91	7.91	7.93	32.19	32.19	32.20	56.4	55.4	56.5	3.78	3.71	3.78	10.43	10.38	<u>10.35</u>	13	12.50
	9:47		Middle	3.5	26.60	26.60		7.95	7.95		32.20	32.20		56.9	57.2		3.81	3.83		10.32	10.28		12	
8/10/18	9:00	Fine	Middle	4.0	26.80	26.80	26.80	7.89	7.89	7.90	32.34	32.34	32.35	79.9	80.0	80.0	5.33	5.34	5.34	8.70	8.65	<u>8.67</u>	14	<u>14.00</u>
	9:02		Middle	4.0	26.80	26.80		7.91	7.91		32.35	32.35		80.2	80.0		5.35	5.33		8.67	8.67		14	
10/10/18	12:15	Cloudy	Middle	4.0	26.20	26.20	26.15	7.94	7.94	7.96	26.91	26.91	21.91	73.8	74.4	74.1	5.13	5.17	5.15	9.20	9.20	<u>9.21</u>	17	<u>17.50</u>
	12:17		Middle	4.0	26.10	26.10		7.97	7.97		26.91	6.91		74.1	74.2		5.15	5.16		9.22	9.21		18	
12/10/18	12:40	Fine	Middle	4.0	26.50	26.50	26.50	7.85	7.85	7.85	32.10	32.10	32.10	75.9	75.9	76.0	5.10	5.10	5.11	7.55	7.56	7.61	11	11.50
	12:42		Middle	4.0	26.50	26.50		7.85	7.85		32.10	32.10		76.0	76.2		5.10	5.12		7.64	7.67		12	
15/10/18	3:45	Cloudy	Middle	4.0	25.70	25.70	25.70	7.88	7.88	7.89	31.82	31.82	31.82	78.1	79.9	78.7	5.32	5.45	5.37	3.88	3.80	3.59	6	9.00
	3:46		Middle	4.0	25.70	25.70		7.90	7.90		31.82	31.82		78.2	78.4		5.33	5.37		3.43	3.23		12	
18/10/18	4:30	Cloudy	Middle	4.0	23.80	23.80	23.80	8.11	8.11	8.11	31.17	31.17	31.44	78.0	79.4	79.0	5.51	5.61	5.58	2.48	2.34	2.43	3	3.00
	4:31		Middle	4.0	23.80	23.80		8.11	8.11		31.70	31.70		79.5	79.0		5.61	5.57		2.37	2.54		3	
20/10/18	8:50	Fine	Middle	3.5	24.70	24.70	24.70	7.79	7.79	7.80	33.14	33.14	33.15	80.8	80.9	79.7	5.56	5.57	5.48	6.57	6.57	6.59	7	6.50
	8:52		Middle	3.5	24.70	24.70		7.80	7.80		33.16	33.16		78.4	78.5		5.38	5.40		6.57	6.63		6	
22/10/18	10:00	Fine	Middle	3.5	26.40	26.40	26.50	7.57	7.57	7.60	33.05	33.05	33.05	82.1	81.9	81.1	5.48	5.47	5.41	8.64	8.60	<u>8.60</u>	13	12.50
	10:02		Middle	3.5	26.60	26.60		7.63	7.63		33.05	33.05		80.1	80.1		5.34	5.34		8.58	8.56		12	
24/10/18	9:55	Fine	Middle	4.0	26.50	26.50	26.55	7.59	7.59	7.62	32.89	32.89	32.90	76.7	76.3	76.0	5.12	5.09	5.07	8.02	8.01	8.00	12	11.50
	9:57		Middle	4.0	26.60	26.60		7.64	7.64		32.90	32.90		75.8	75.3		5.06	5.02		7.99	7.99		11	
26/10/18	12:15	Fine	Middle	3.5	28.00	28.00	28.10	7.49	7.49	7.52	32.50	32.50	32.50	81.7	81.5	82.0	5.33	5.31	5.34	7.71	7.75	7.76	10	11.00
	12:17		Middle	3.5	28.20	28.20		7.55	7.55		32.49	32.49		82.3	82.3		5.36	5.36		7.78	7.79		12	

Remarks:
Single underline denotes exceedance over Action Level.
Double underline denotes exceedance over Limit Level.

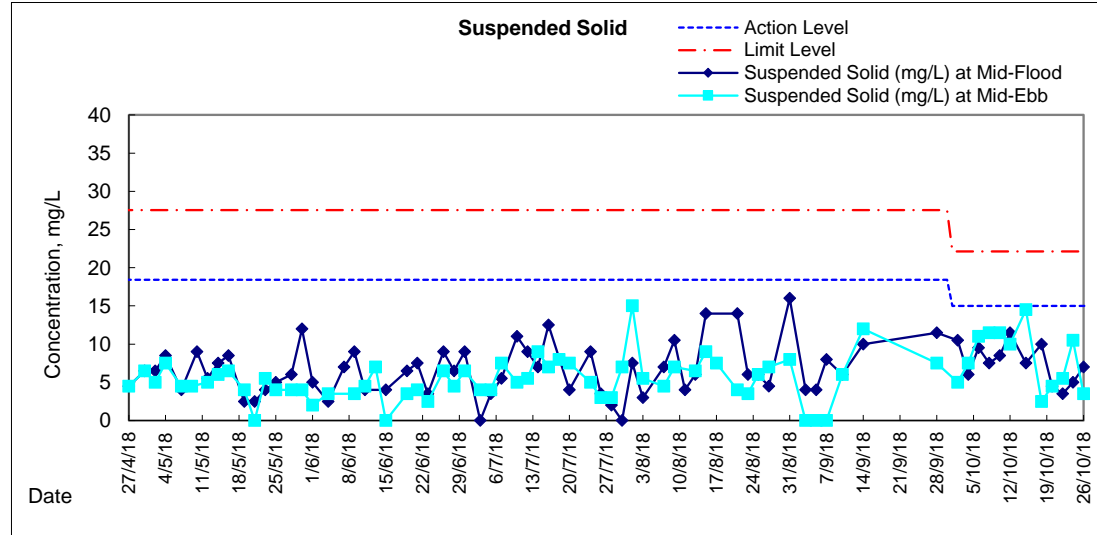
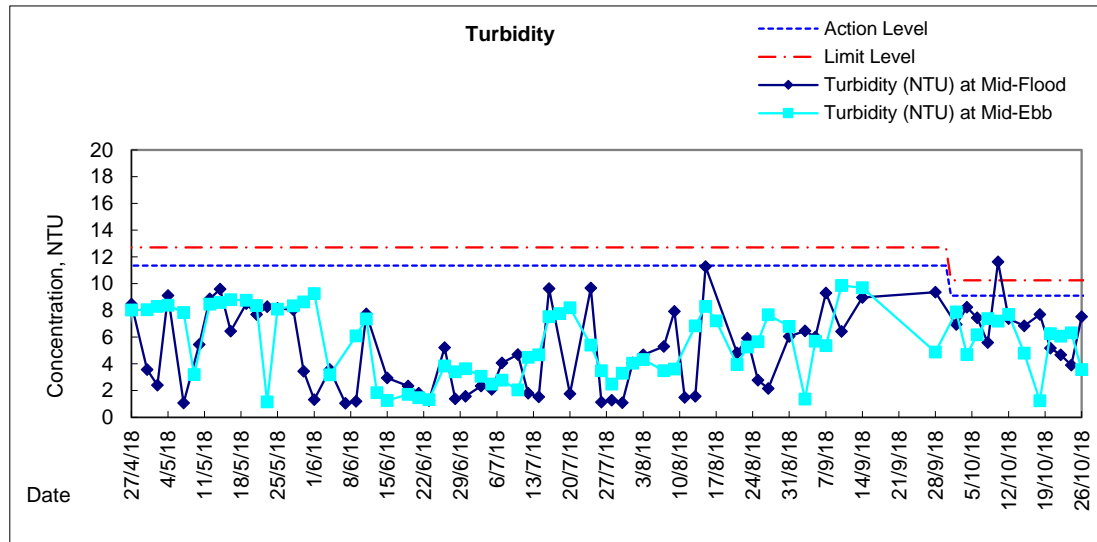
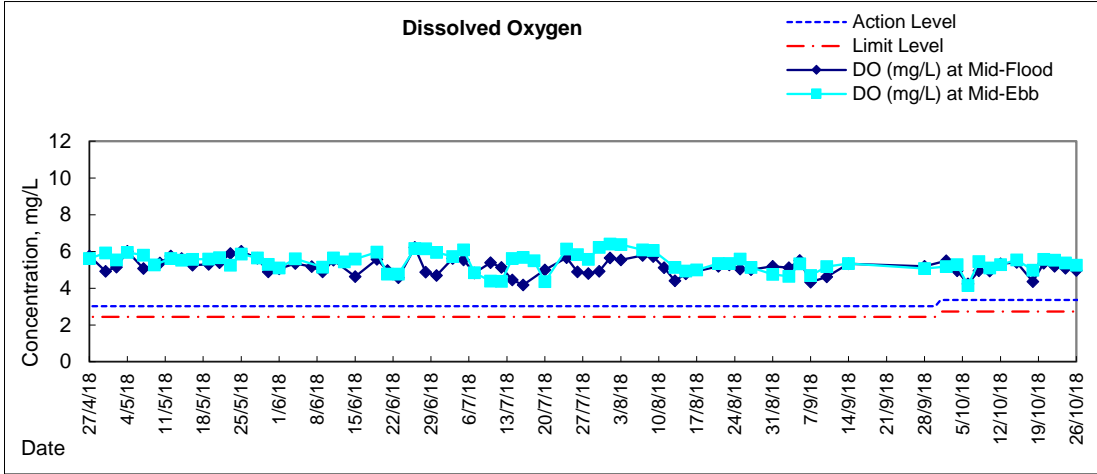


Graphic Presentation of Water Quality Result of WSD19 - Sheung Wan



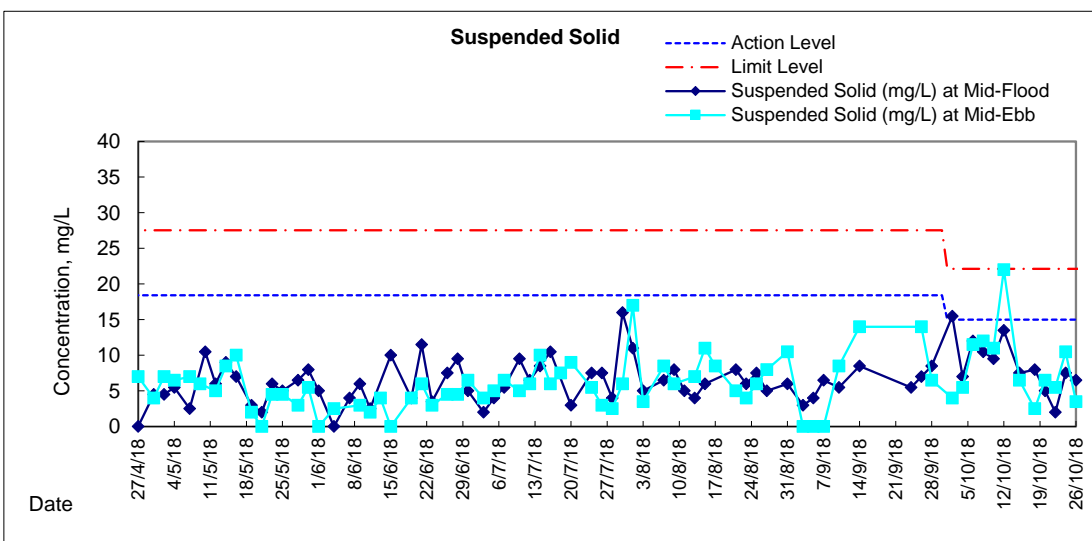
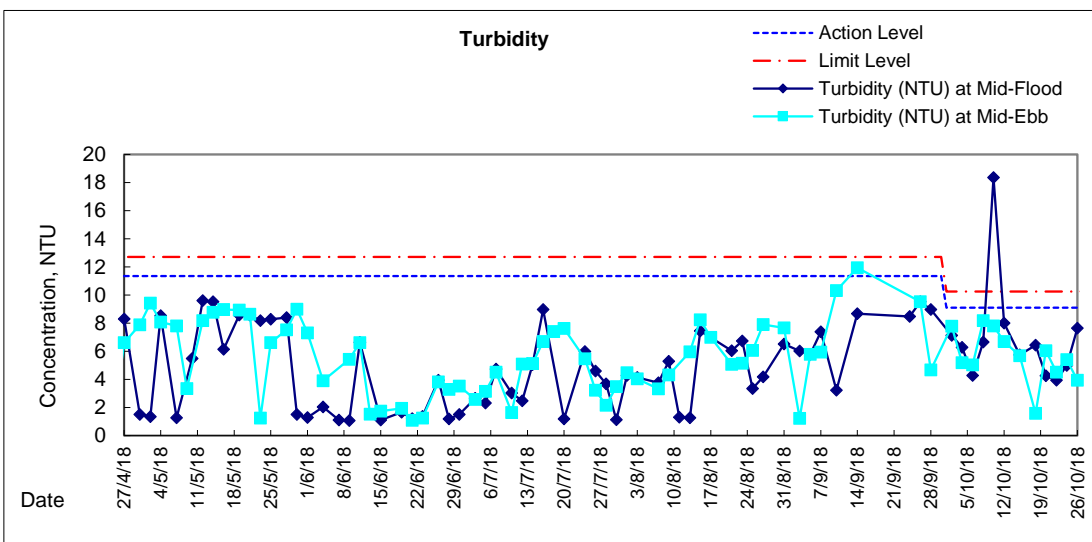
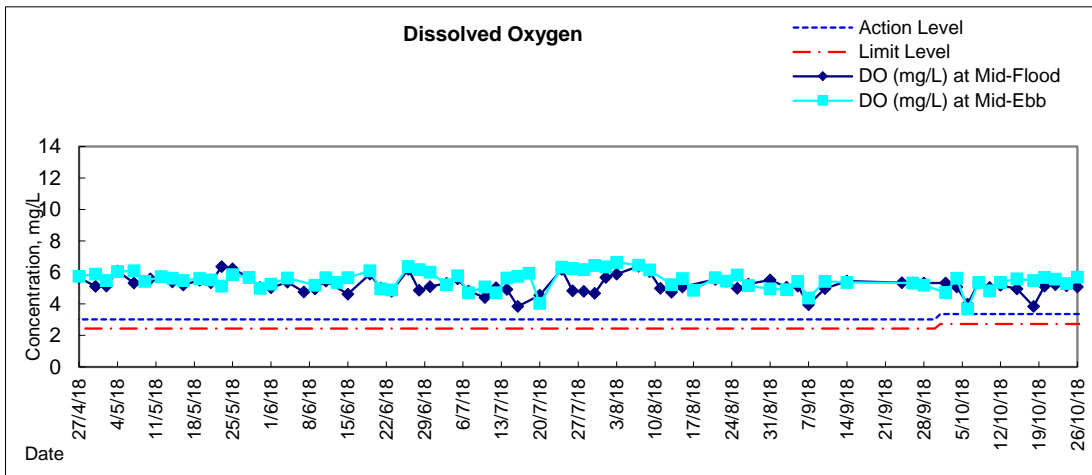


Graphic Presentation of Water Quality Result of C1 - HKCEC



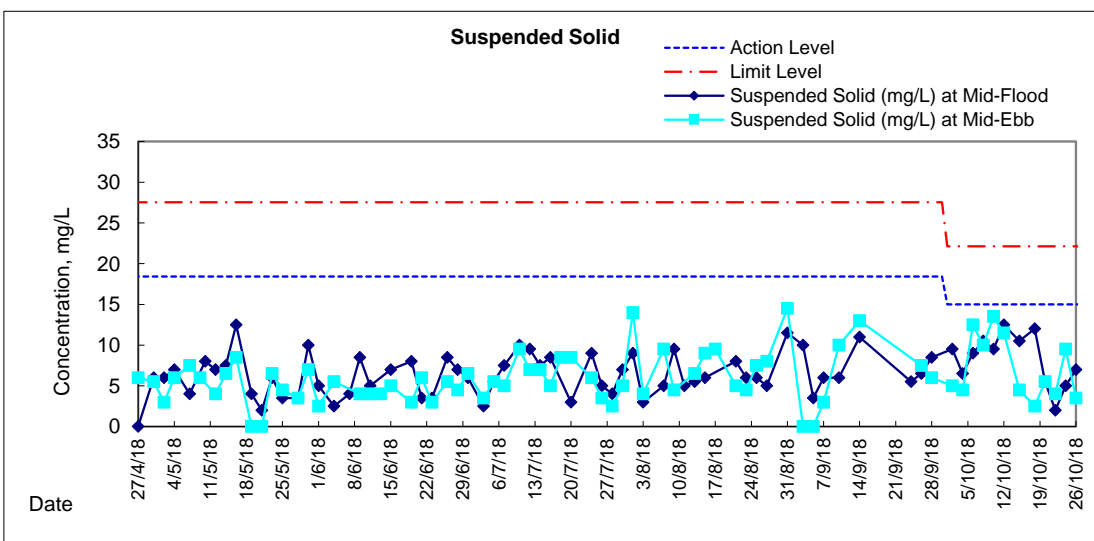
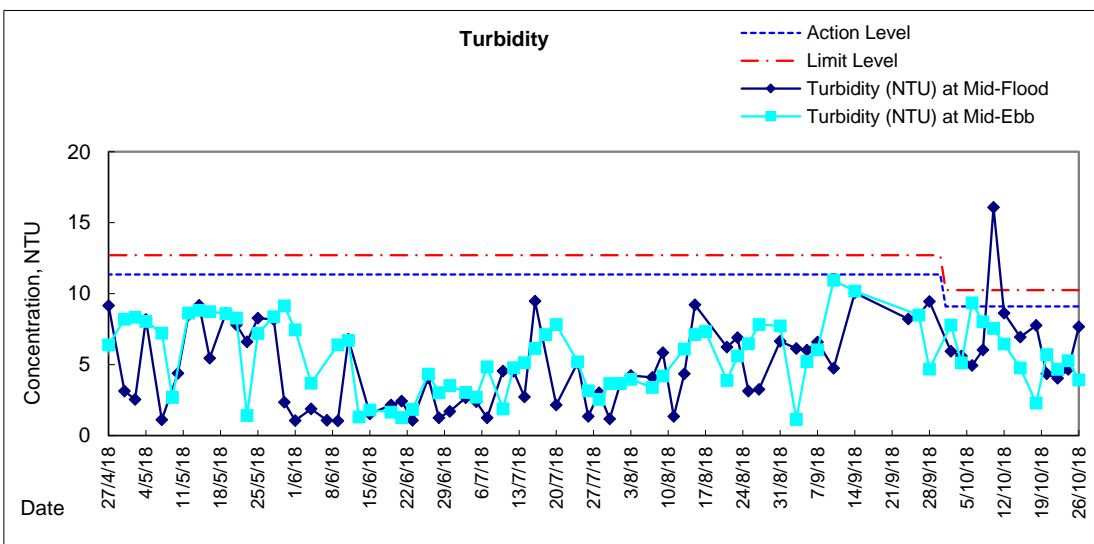
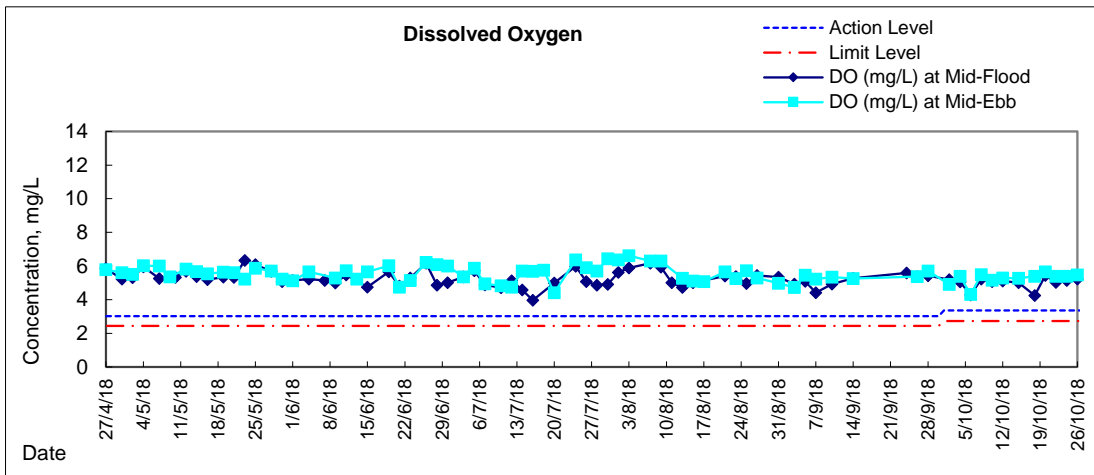


Graphic Presentation of Water Quality Result of P1 - HKCEC Phase I



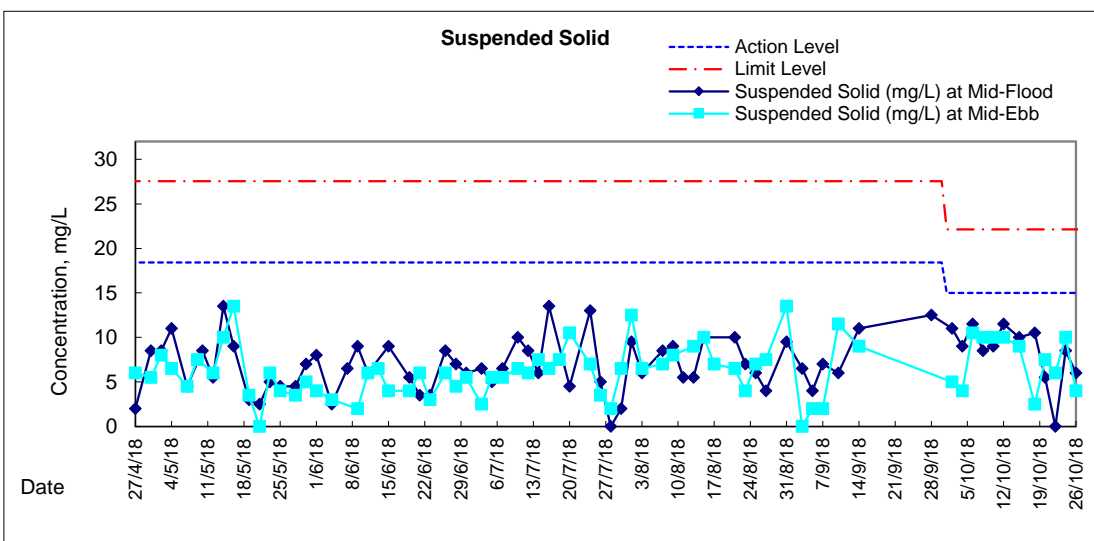
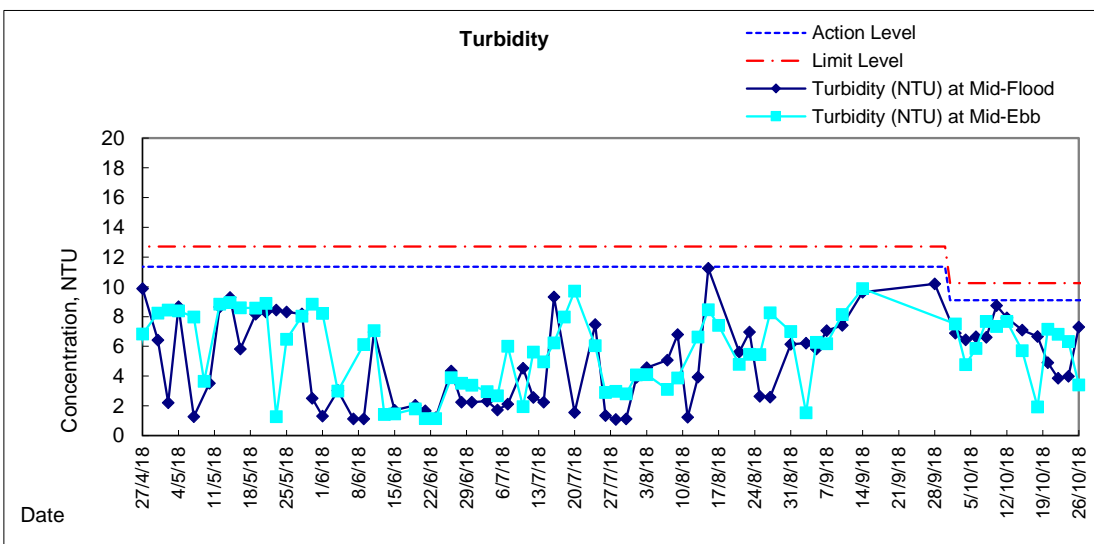
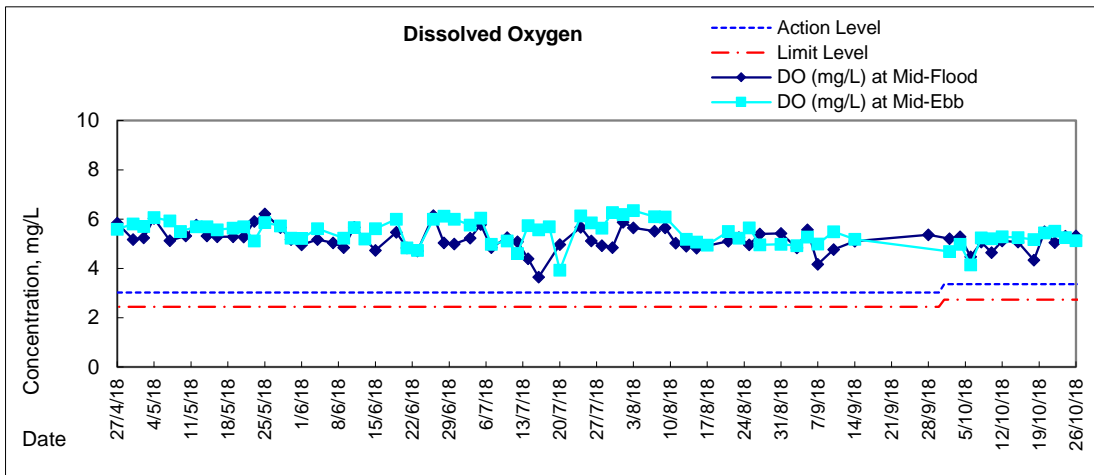


Graphic Presentation of Water Quality Result of P3 - APA



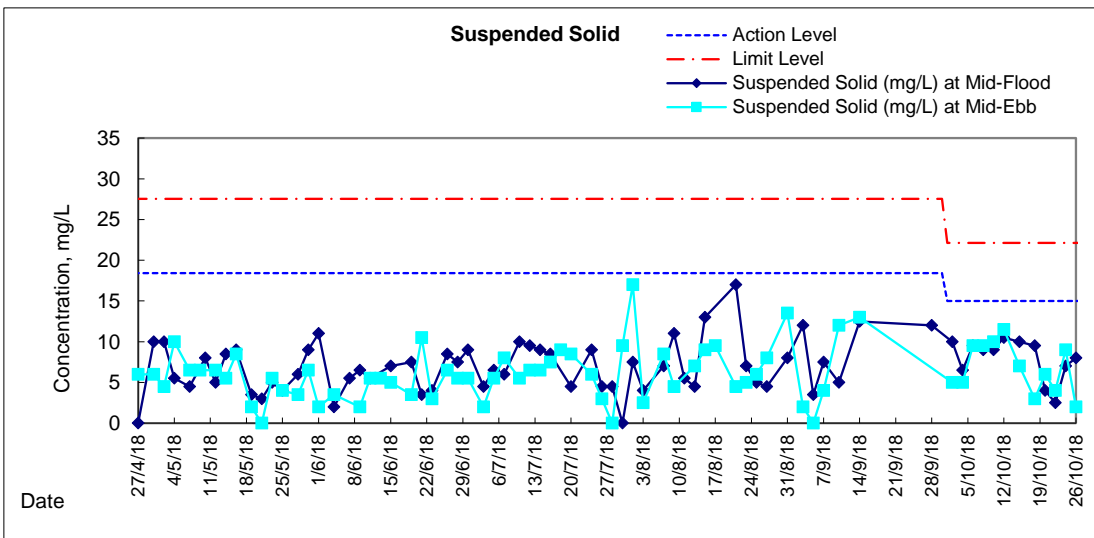
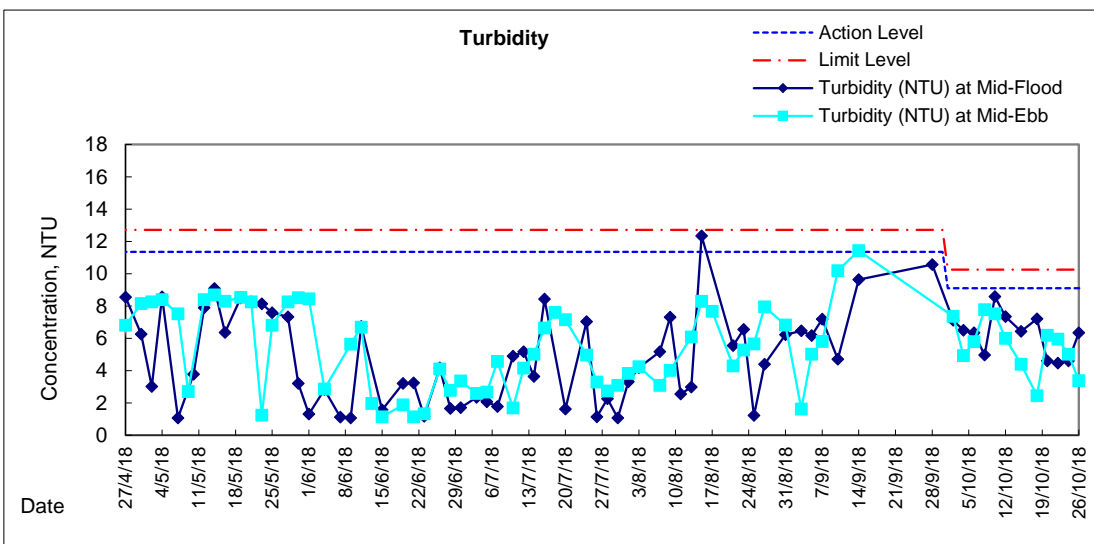
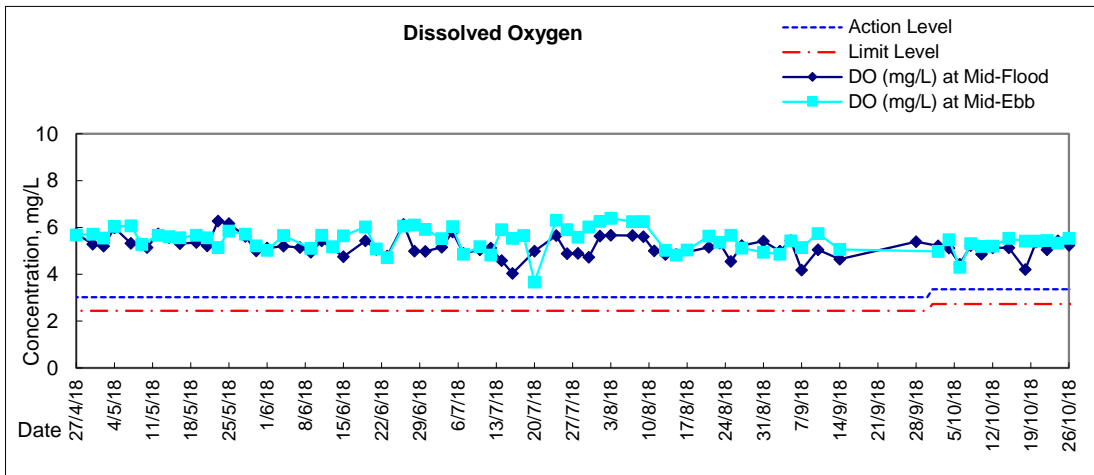


Graphic Presentation of Water Quality Result of P5 - WCT / RT / IT



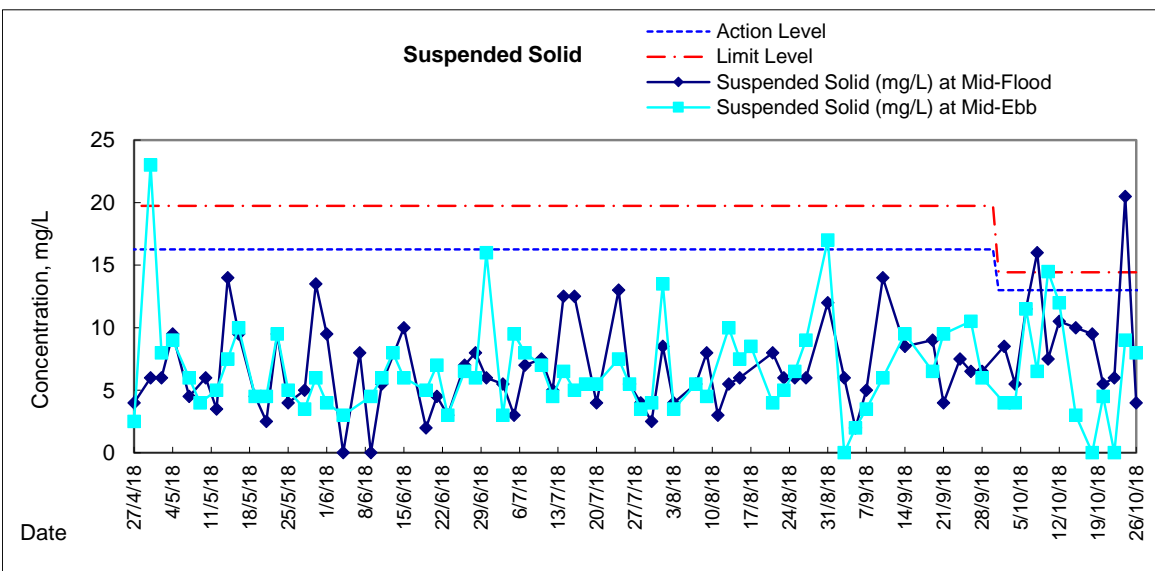
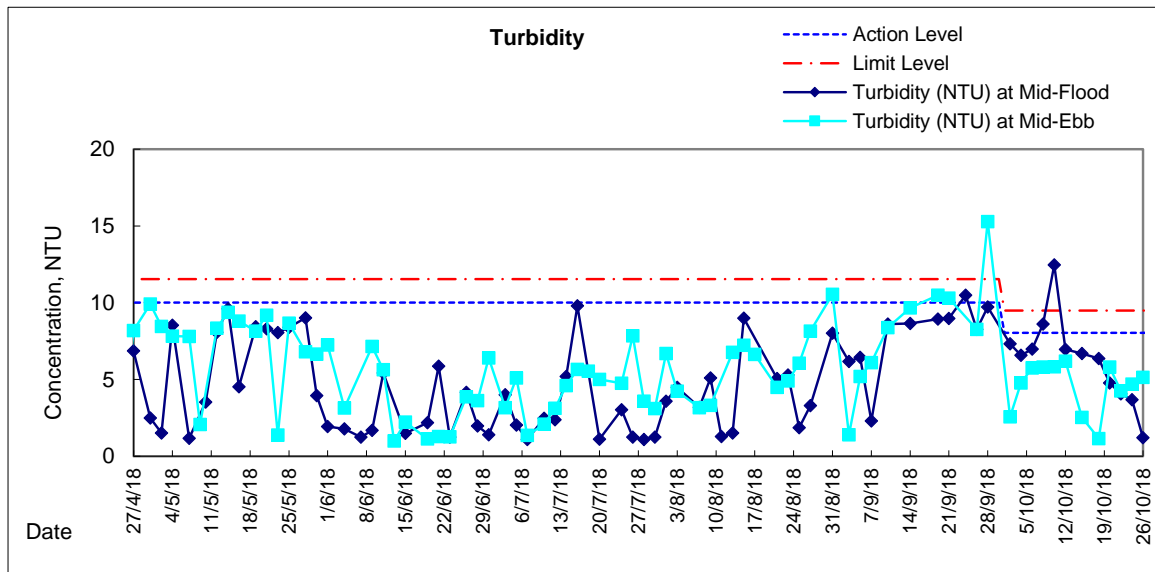
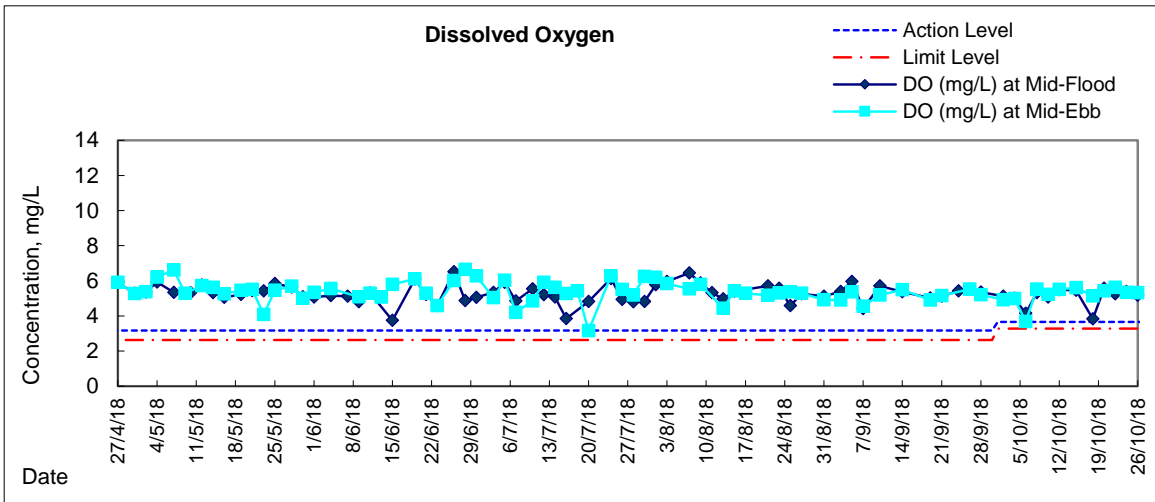


Graphic Presentation of Water Quality Result of P4 - SOC





Graphic Presentation of Water Quality Result of RW21-P789 - GEC/CRC/SHK





Graphic Presentation of Water Quality Result of C7 - Windsor House

